

## Images of RS9 (*Fraxinus*-scraping) residues

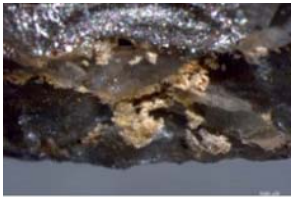
using Leica MZ16 stereomicroscope; none are extended depth of focus

The key to the images is in the first two pages of this document.

Note: the black residue visible in images RS9Vk,RS9VI,RS9Vp,and RS9Vq is a contaminant; it is from the carbon tape used to attach the tool to the stub during VP-SEM imaging.

The images published in this pdf are those that were used in the training portion of the experiment reported in Monnier et al. 2012, *J. Arch. Sci.* For questions, please contact Gilliane Monnier at [monni003@umn.edu](mailto:monni003@umn.edu).

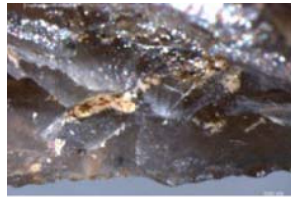
Naming conventions: 'RS' = Residue Study; 'D' = Dorsal side; 'V' = Ventral side; 'a', 'b', etc. = residue label; '25', '50', '115' = magnification used



RS9D\_a50.jpg



RS9D\_a115.jpg



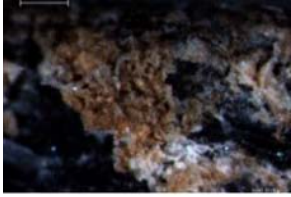
RS9D\_b50.jpg



RS9D\_b115.jpg



RS9D\_d50.jpg



RS9D\_d115\_a.jpg



RS9D\_d115\_b.jpg



RS9D\_e50.jpg



RS9D\_e115.jpg



RS9D\_f50.jpg



RS9D\_f115.jpg



RS9D\_g50.jpg



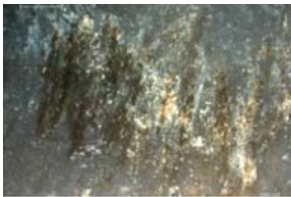
RS9D\_g115.jpg



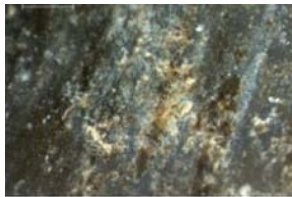
RS9V\_a50.jpg



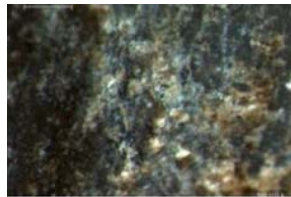
RS9V\_a115.jpg



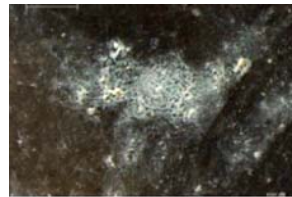
RS9V\_b20.jpg



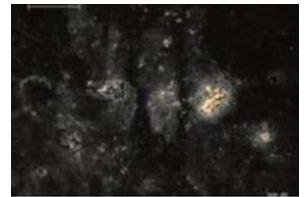
RS9V\_b50.jpg



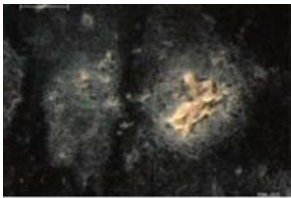
RS9V\_b115\_b.jpg



RS9V\_c50.jpg



RS9V\_d50.jpg



RS9V\_d115.jpg



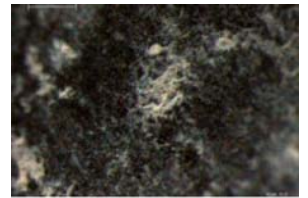
RS9V\_e50.jpg



RS9V\_e115.jpg



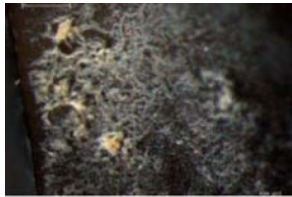
RS9V\_f50.jpg



RS9V\_f115.jpg



RS9V\_g50.jpg



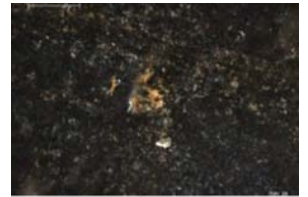
RS9V\_g115.jpg



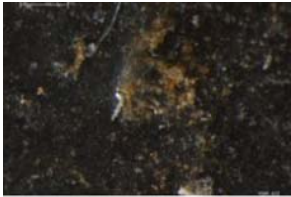
RS9V\_i50.jpg



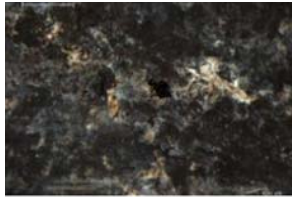
RS9V\_i115.jpg



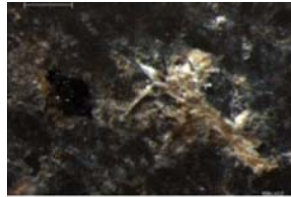
RS9V\_j50.jpg



RS9V\_j115.jpg



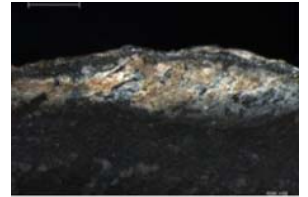
RS9V\_k50.jpg



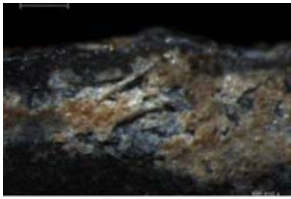
RS9V\_k115.jpg



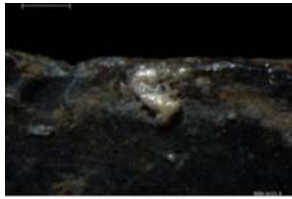
RS9V\_l115\_b.jpg



RS9V\_m50.jpg



RS9V\_m115\_a.jpg



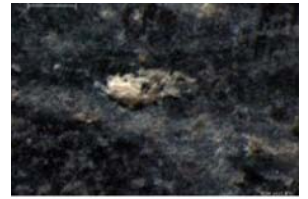
RS9V\_m115\_b.jpg



RS9V\_n50.jpg



RS9V\_n115\_a.jpg



RS9V\_n115\_b.jpg



RS9V\_o50.jpg



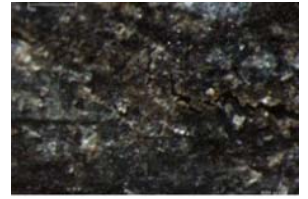
RS9V\_o115.jpg



RS9V\_q50.jpg



RS9V\_q115\_a.jpg



RS9V\_q115\_b.jpg

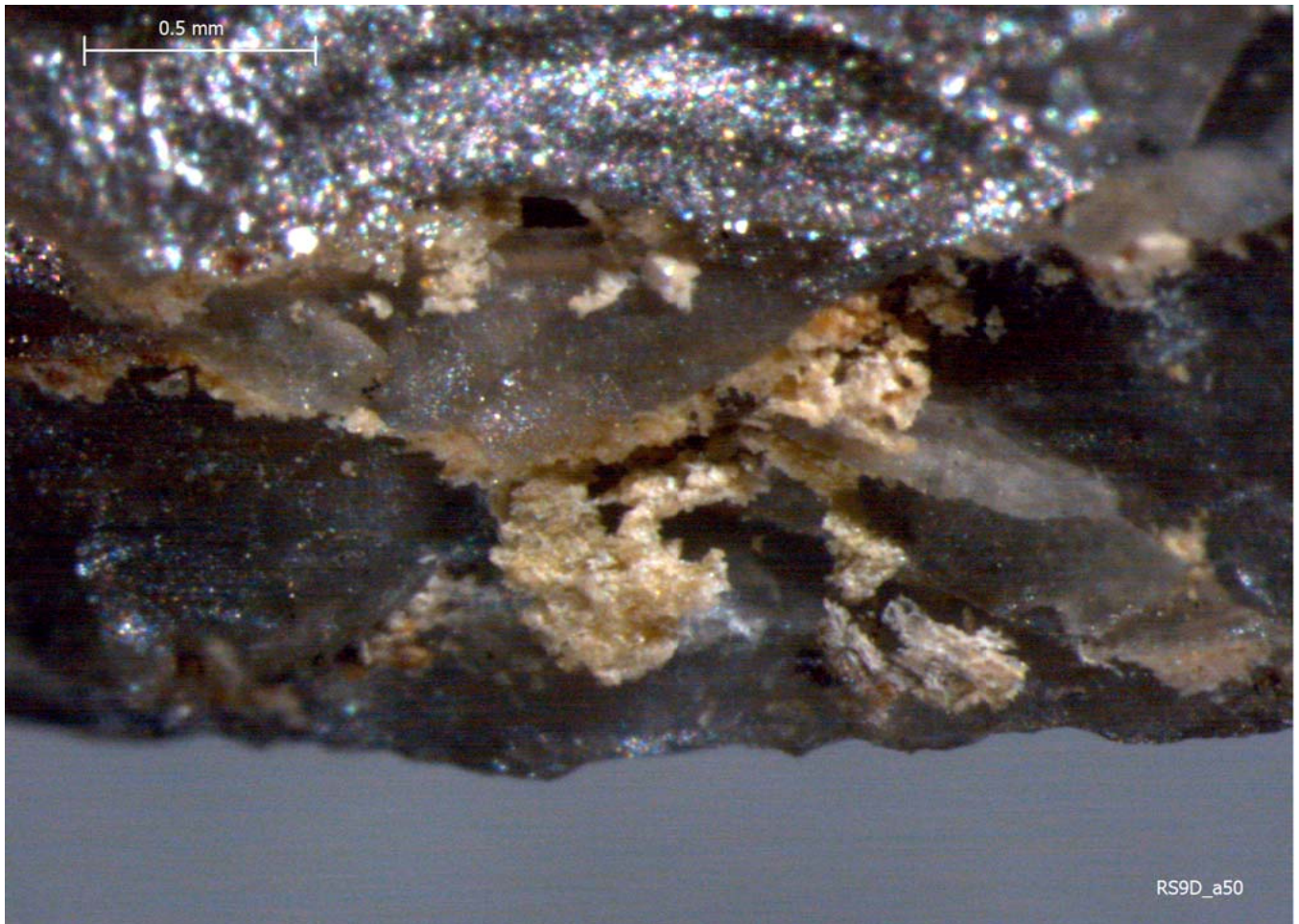


RS9V\_r50.jpg

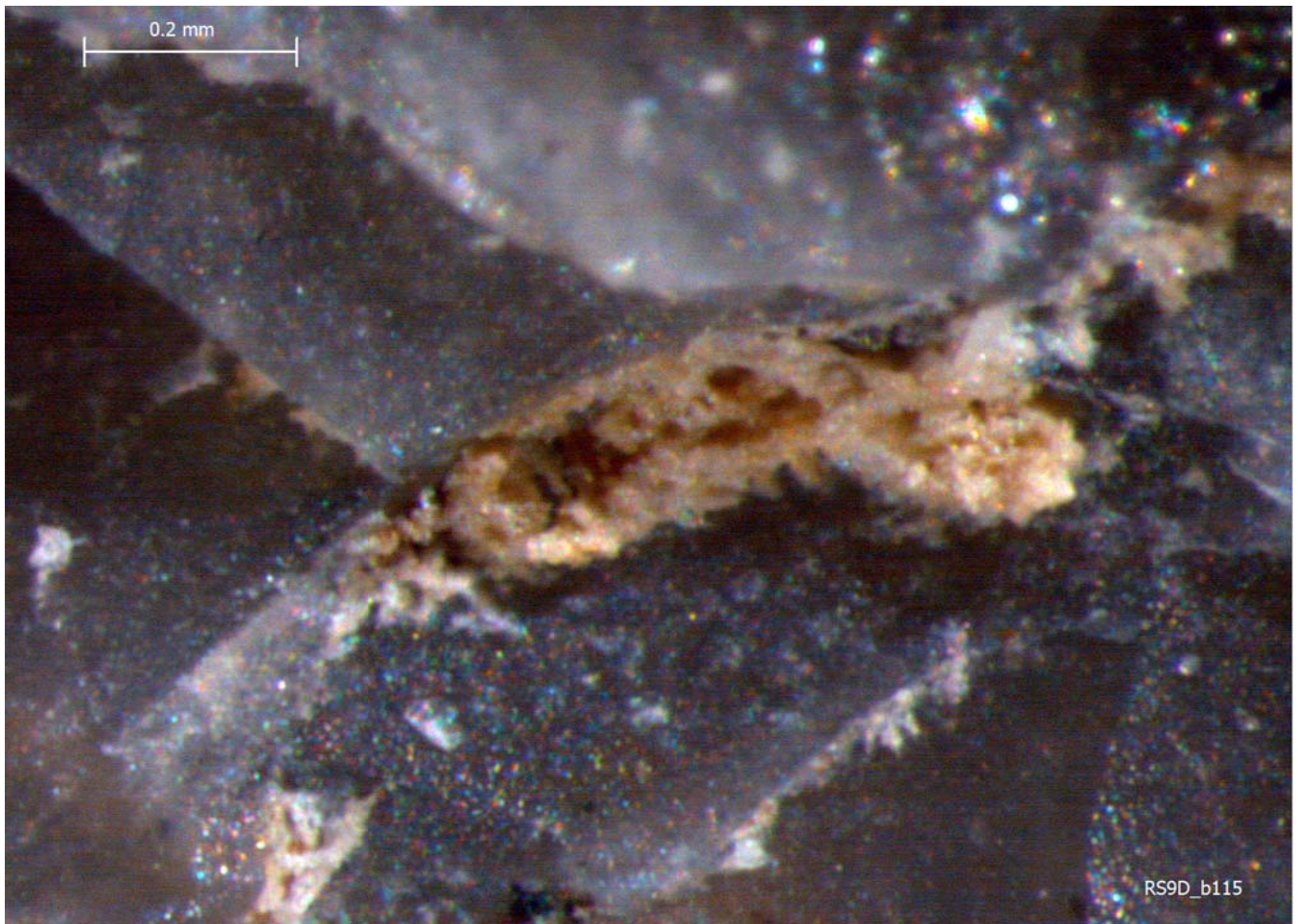
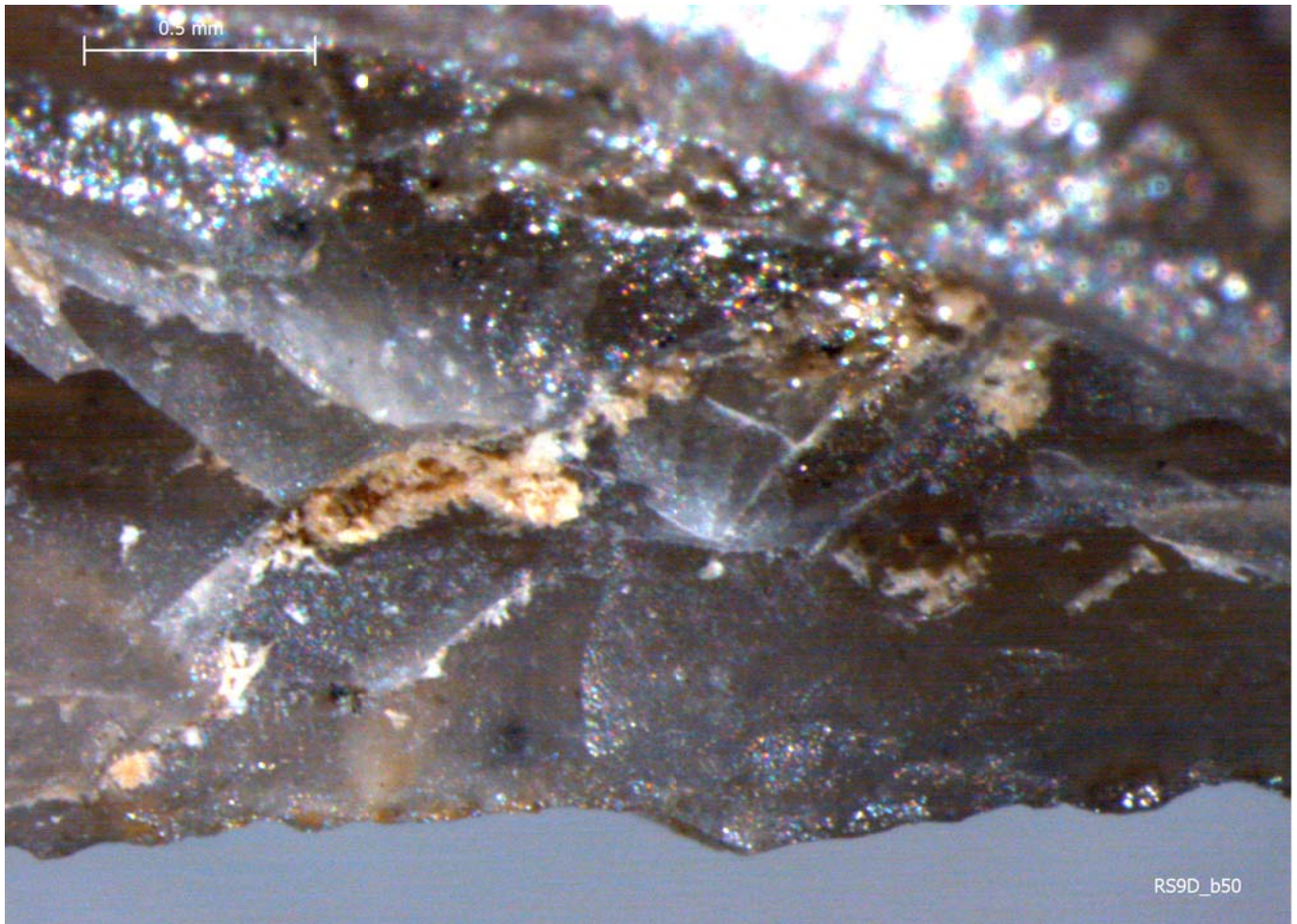


RS9V\_r115.jpg

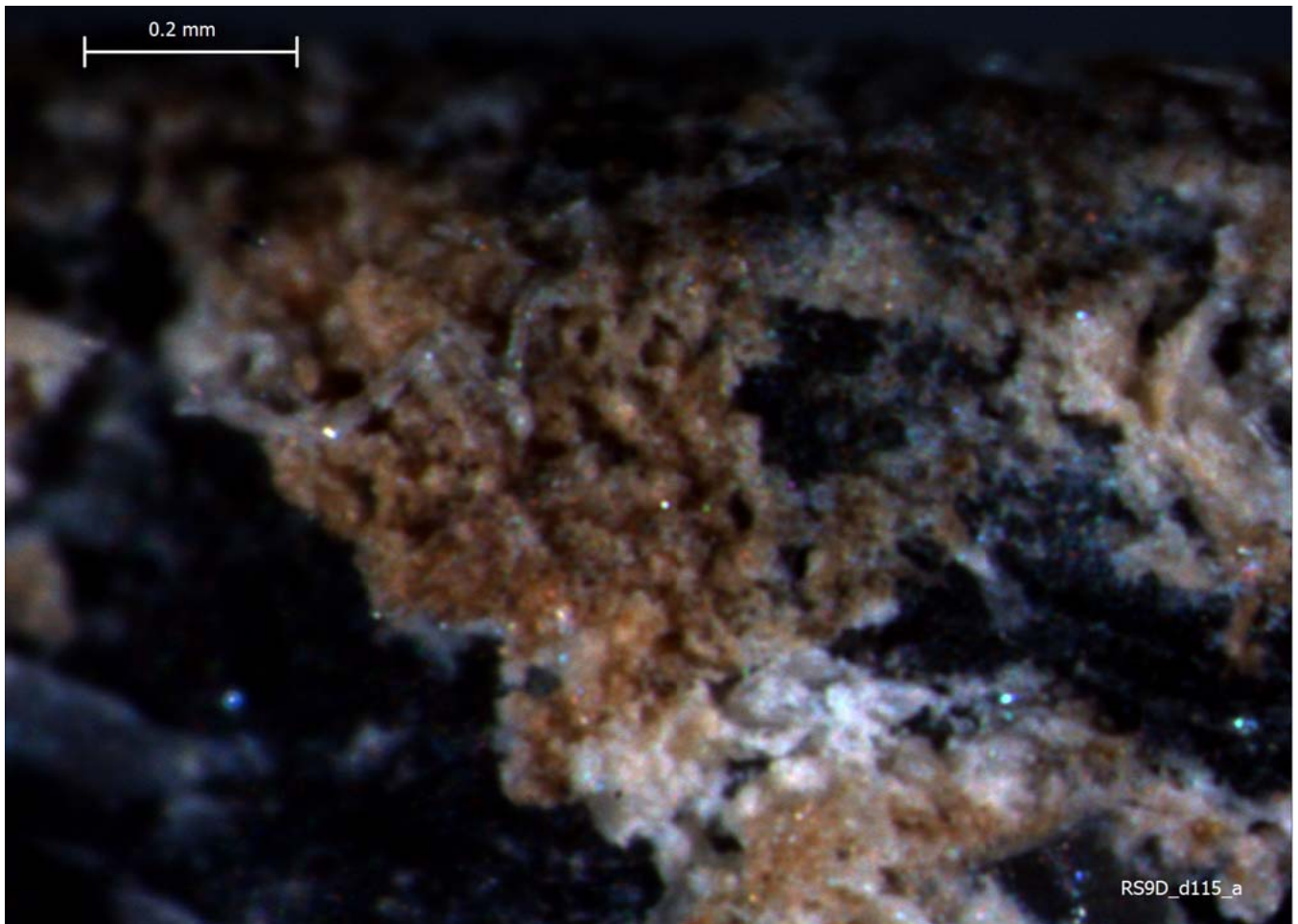
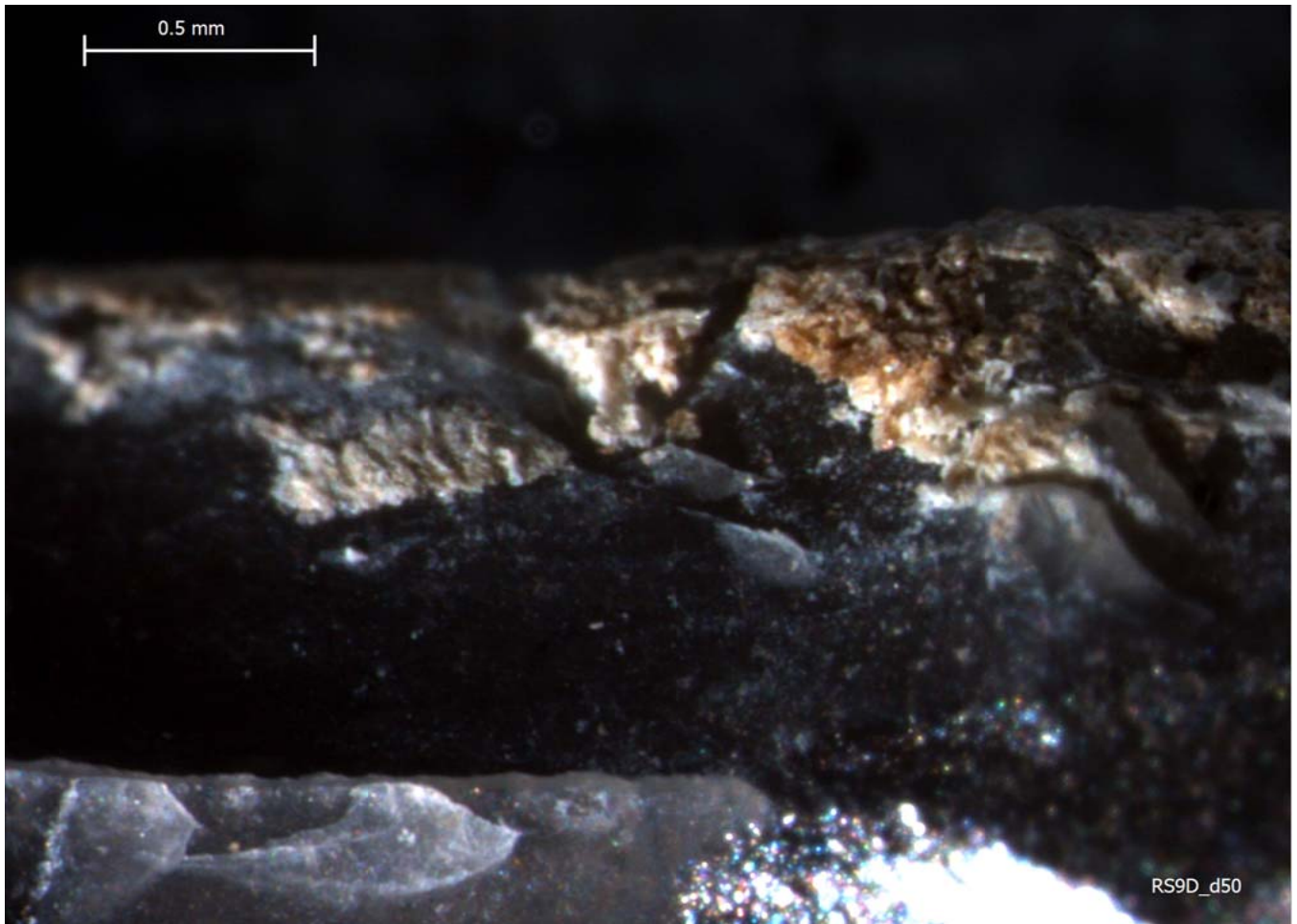






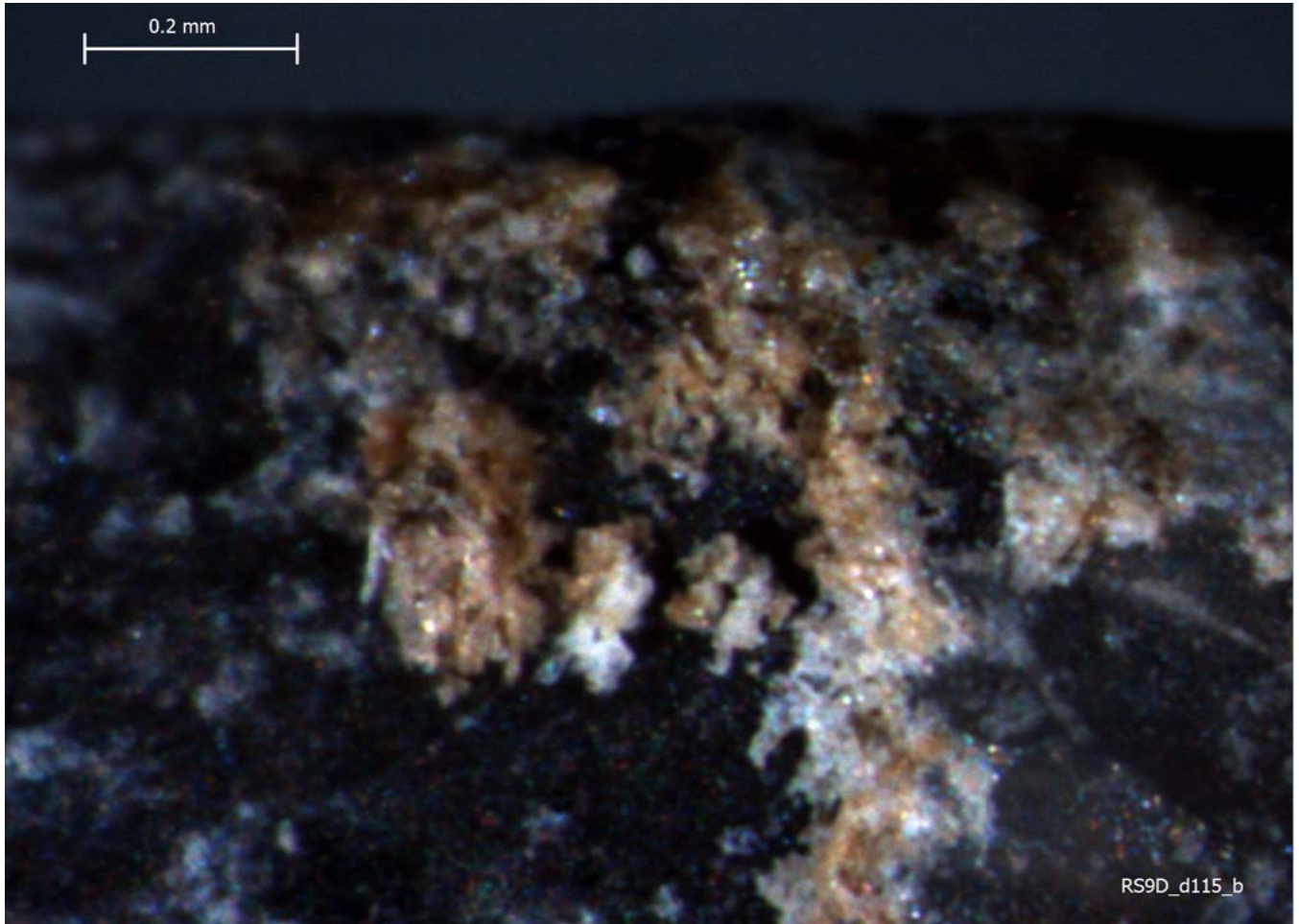








0.2 mm



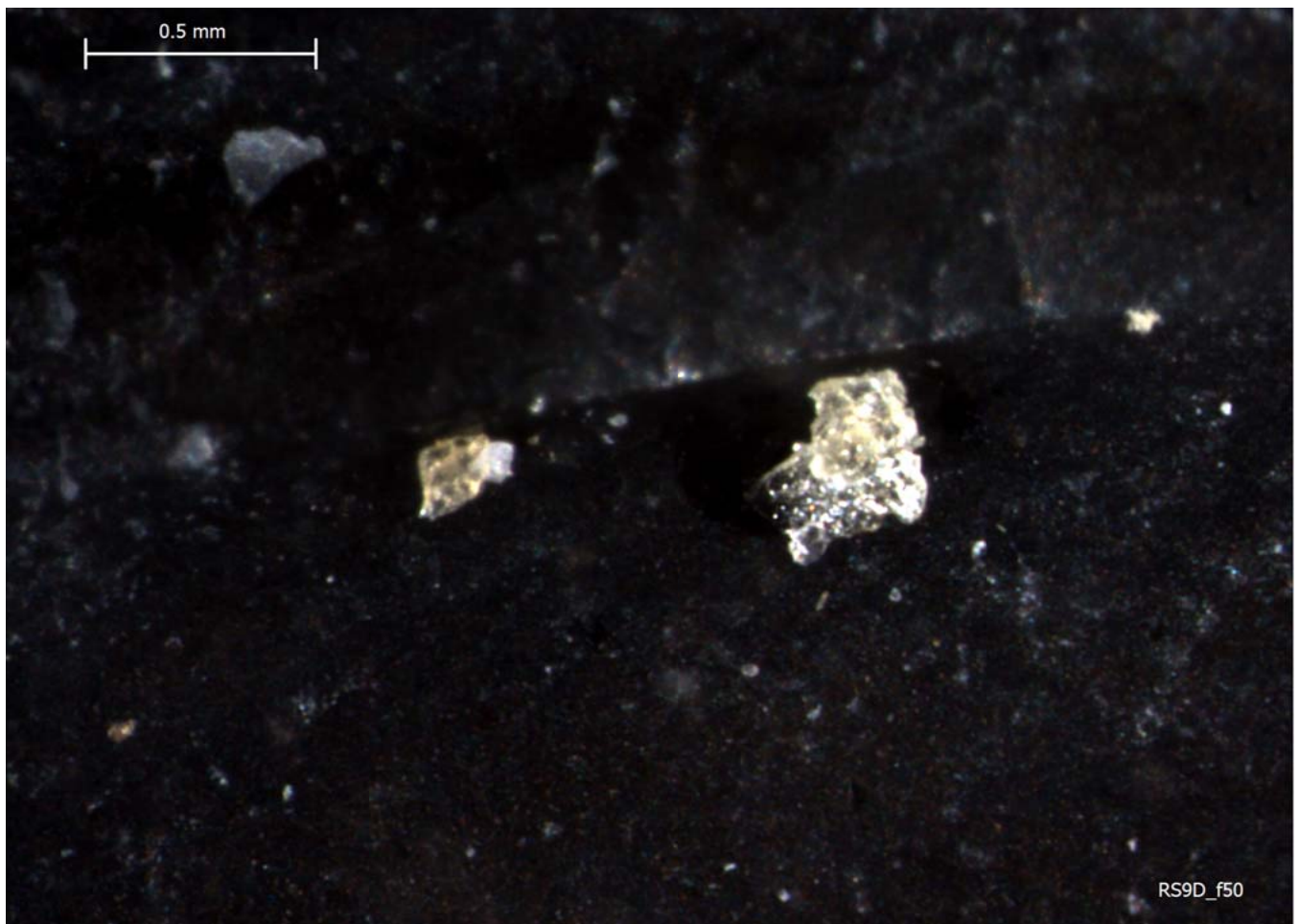
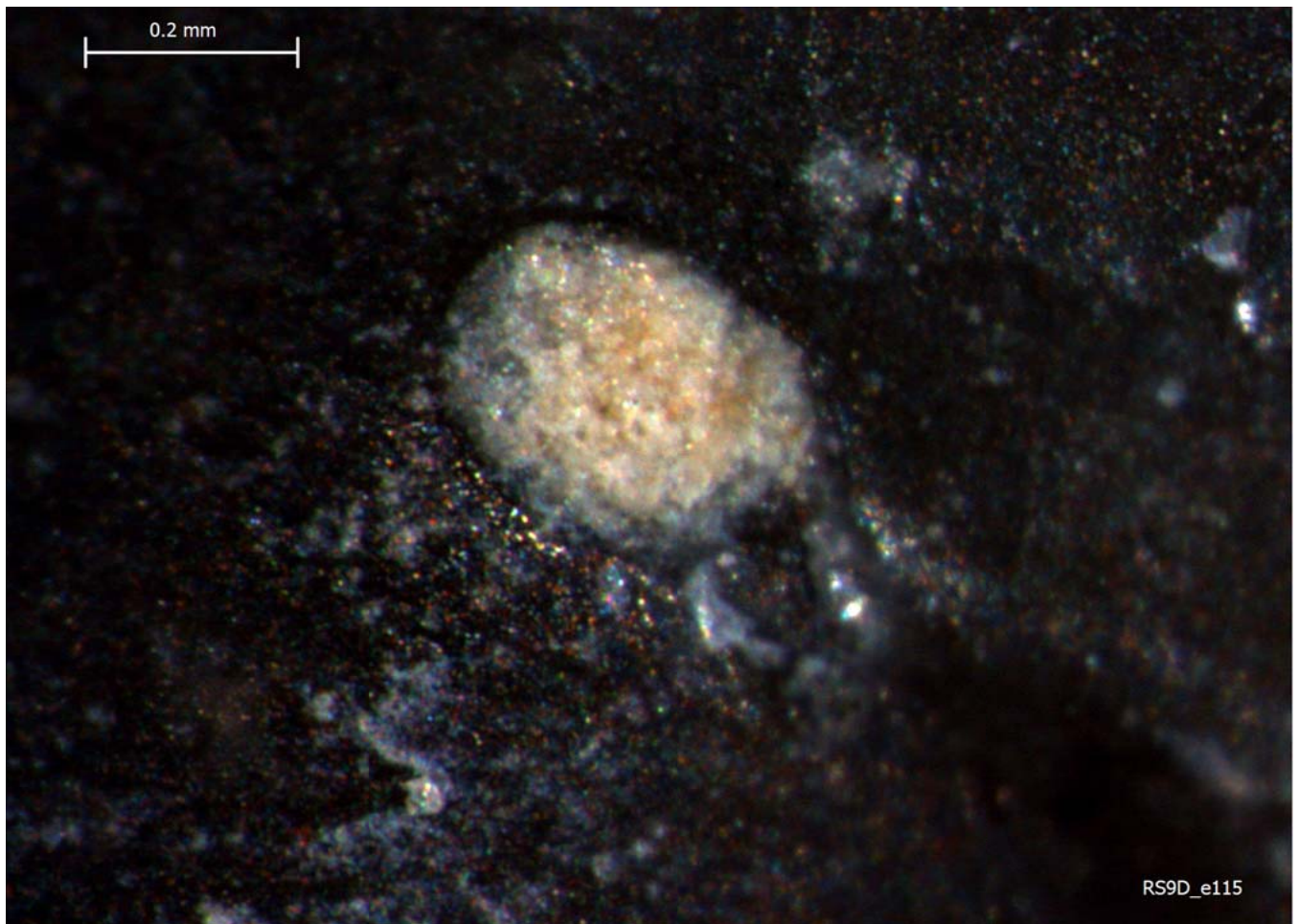
RS9D\_d115\_b

0.5 mm

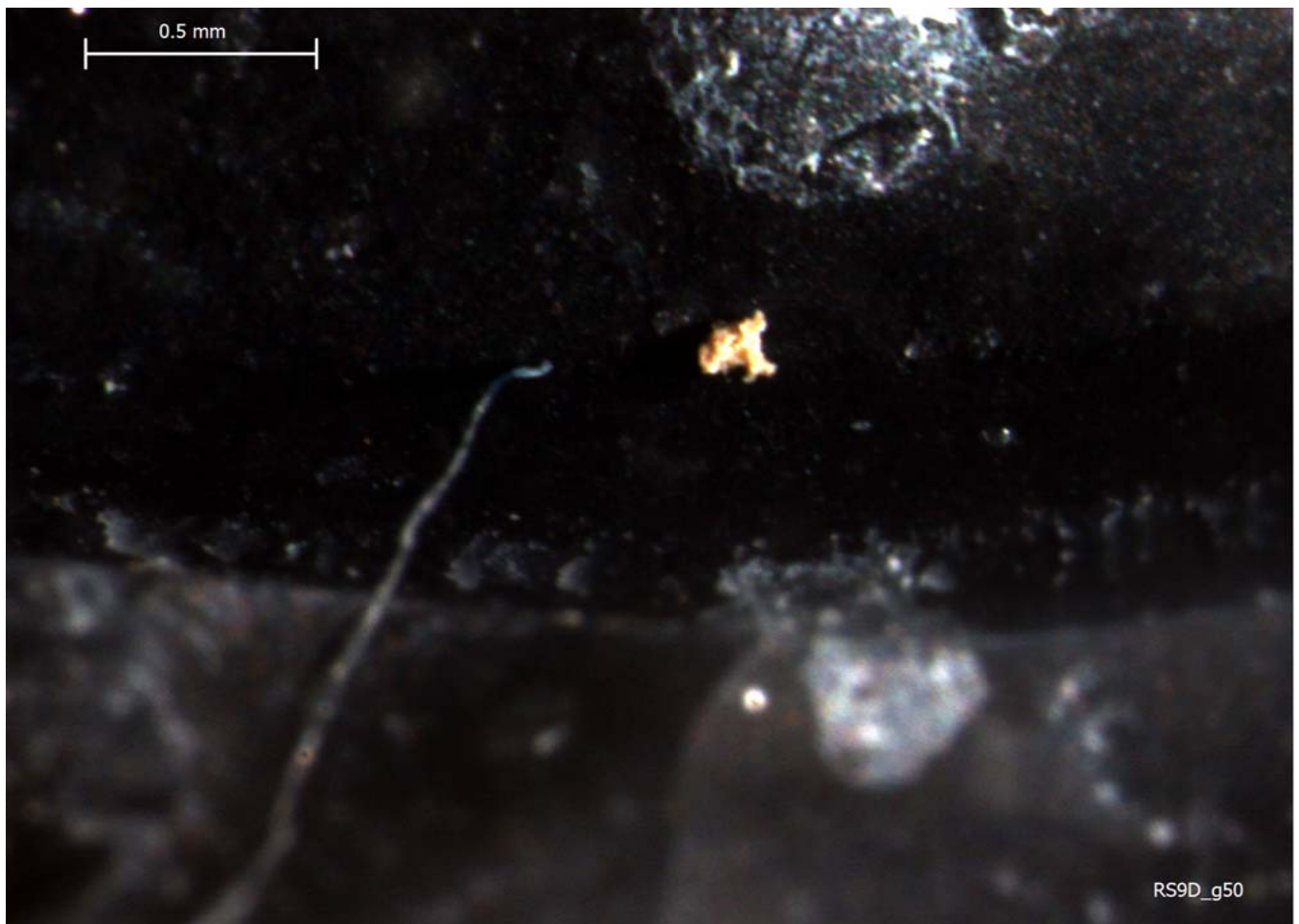
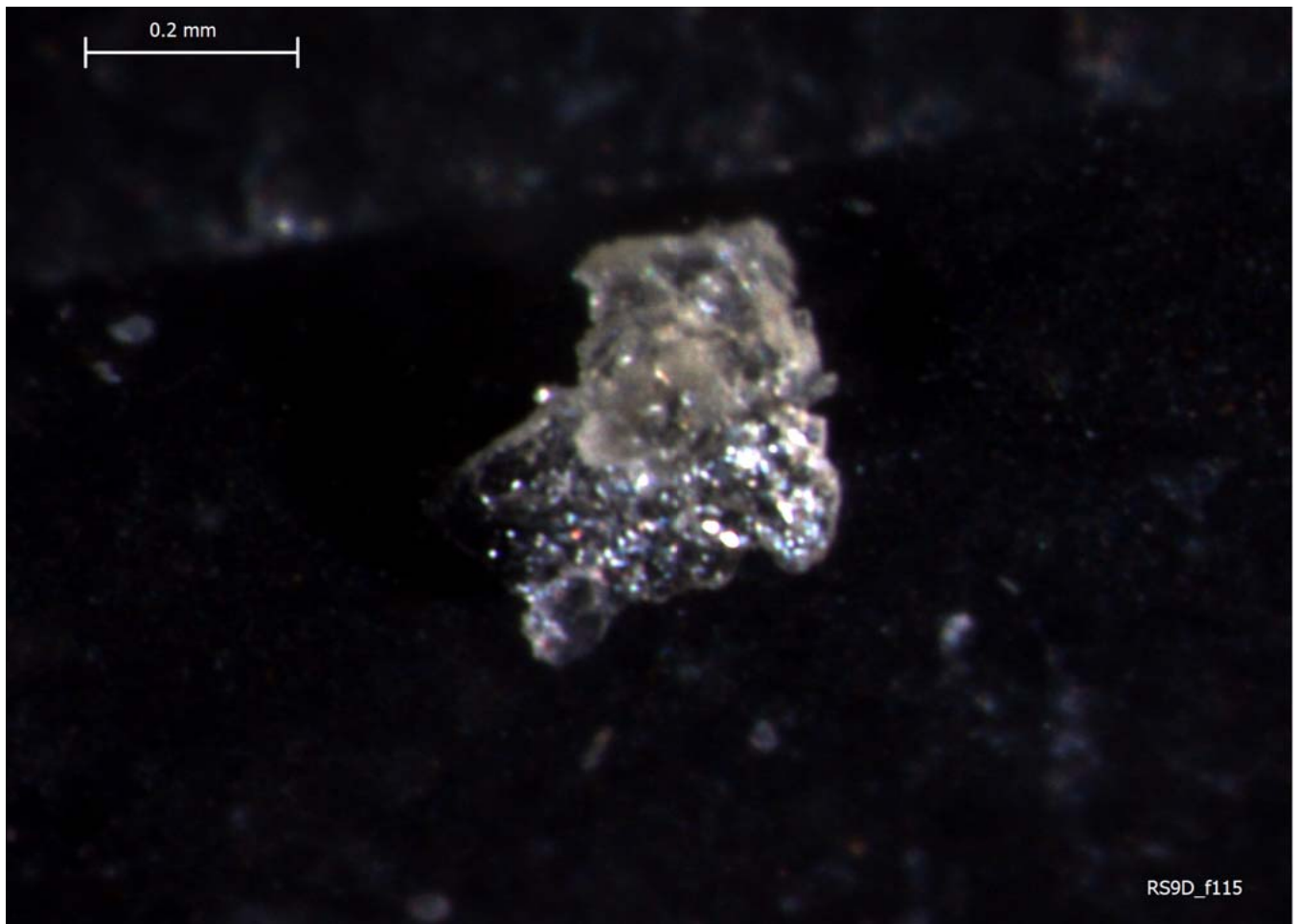


RS9D\_e50

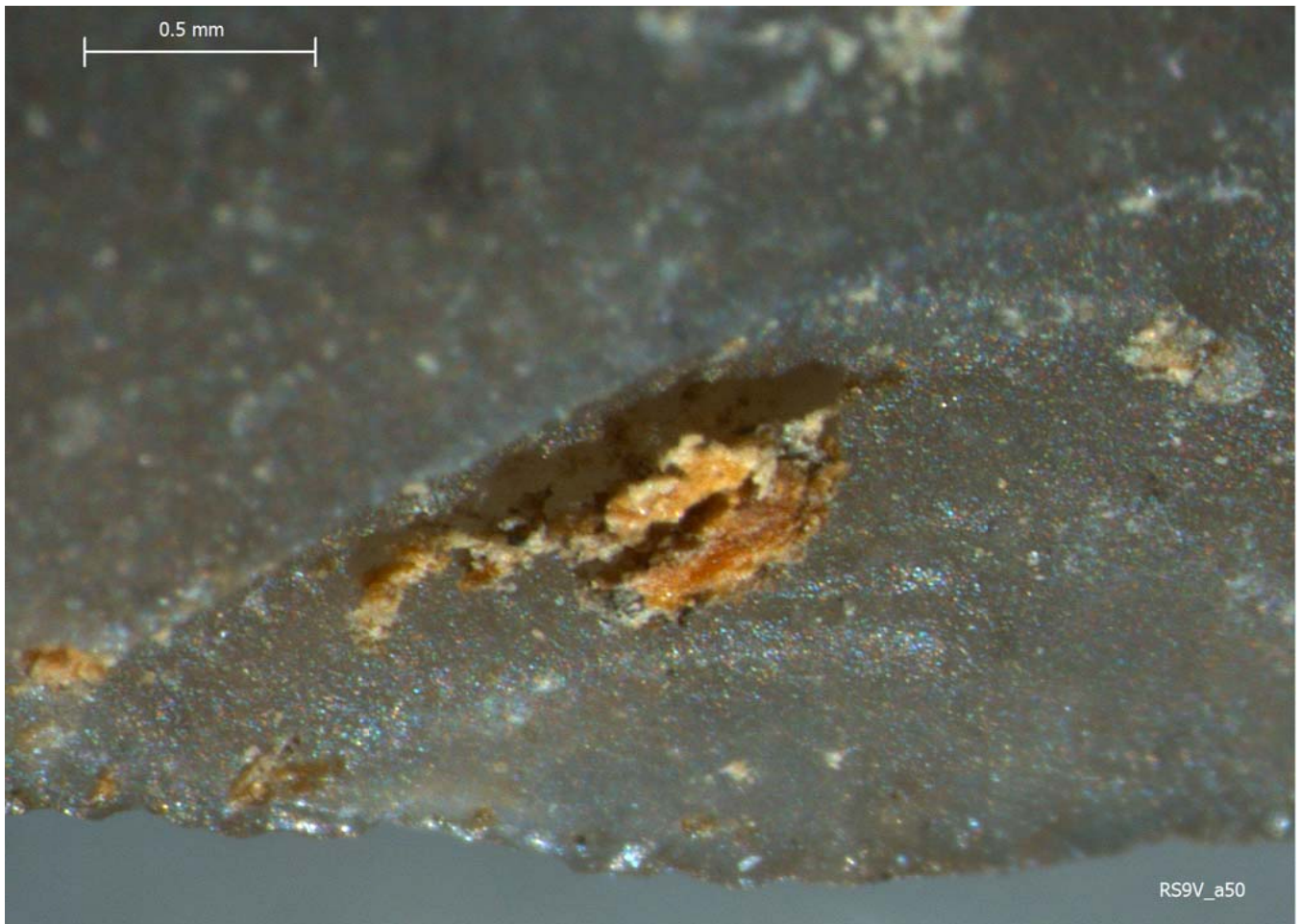
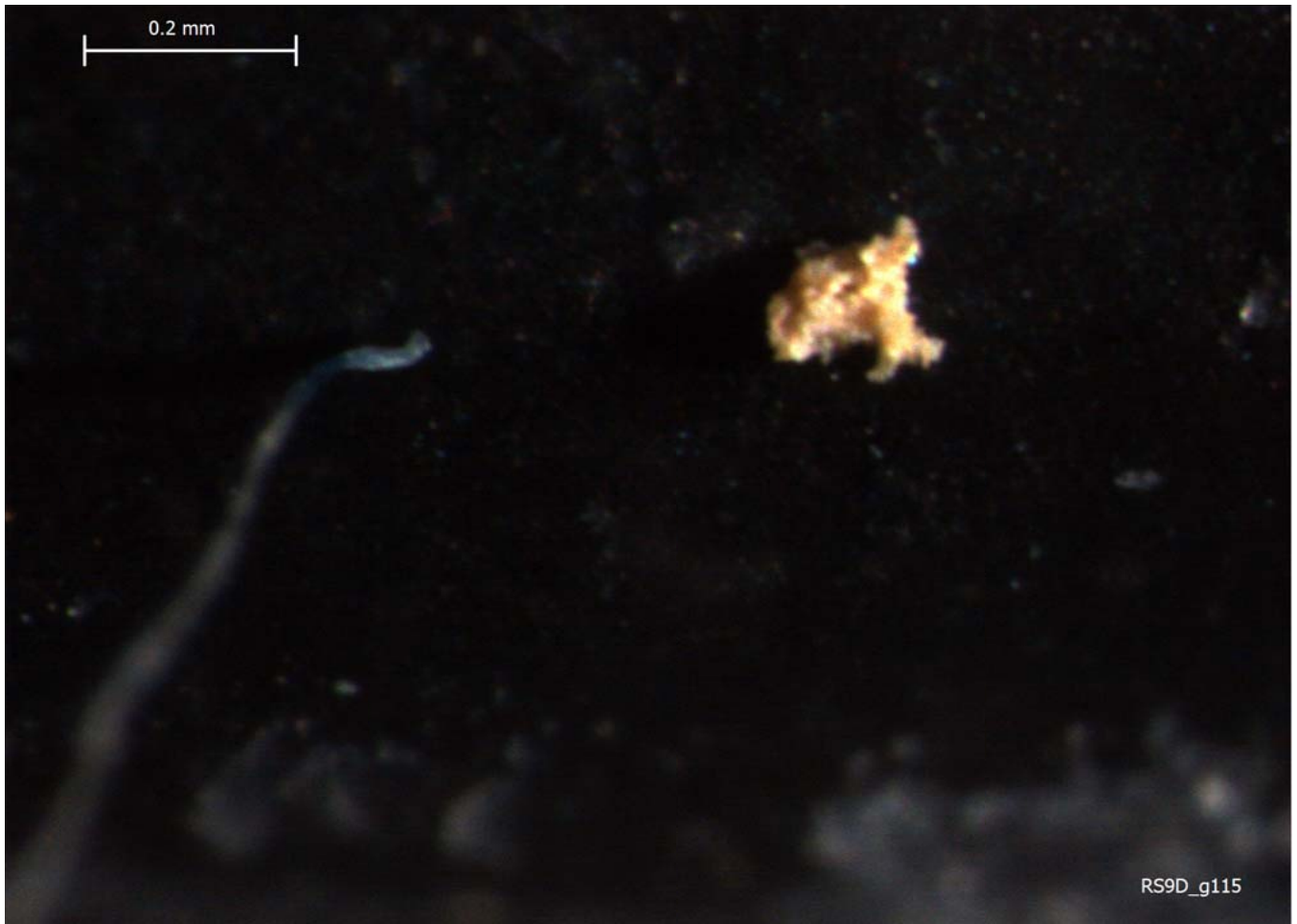




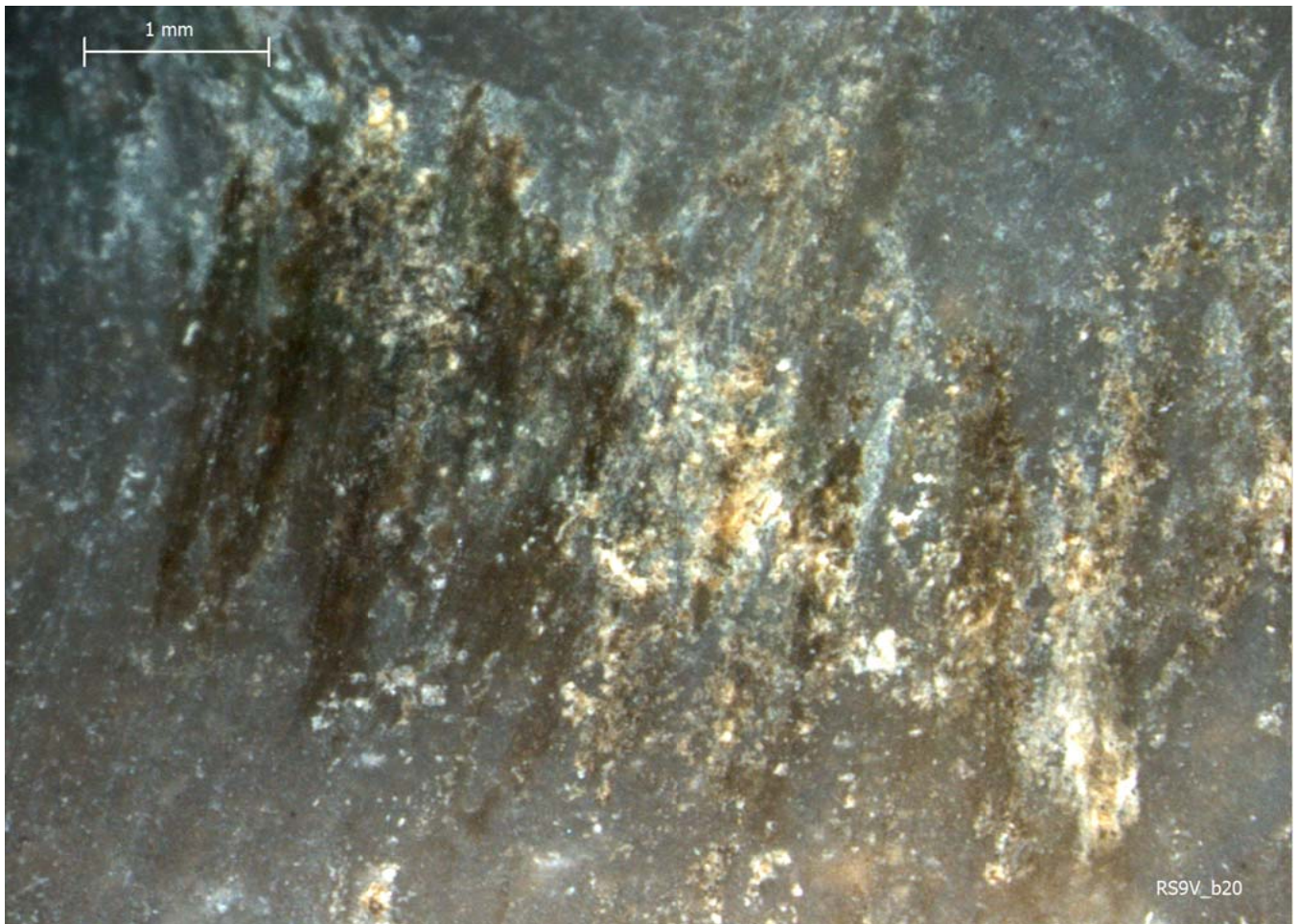




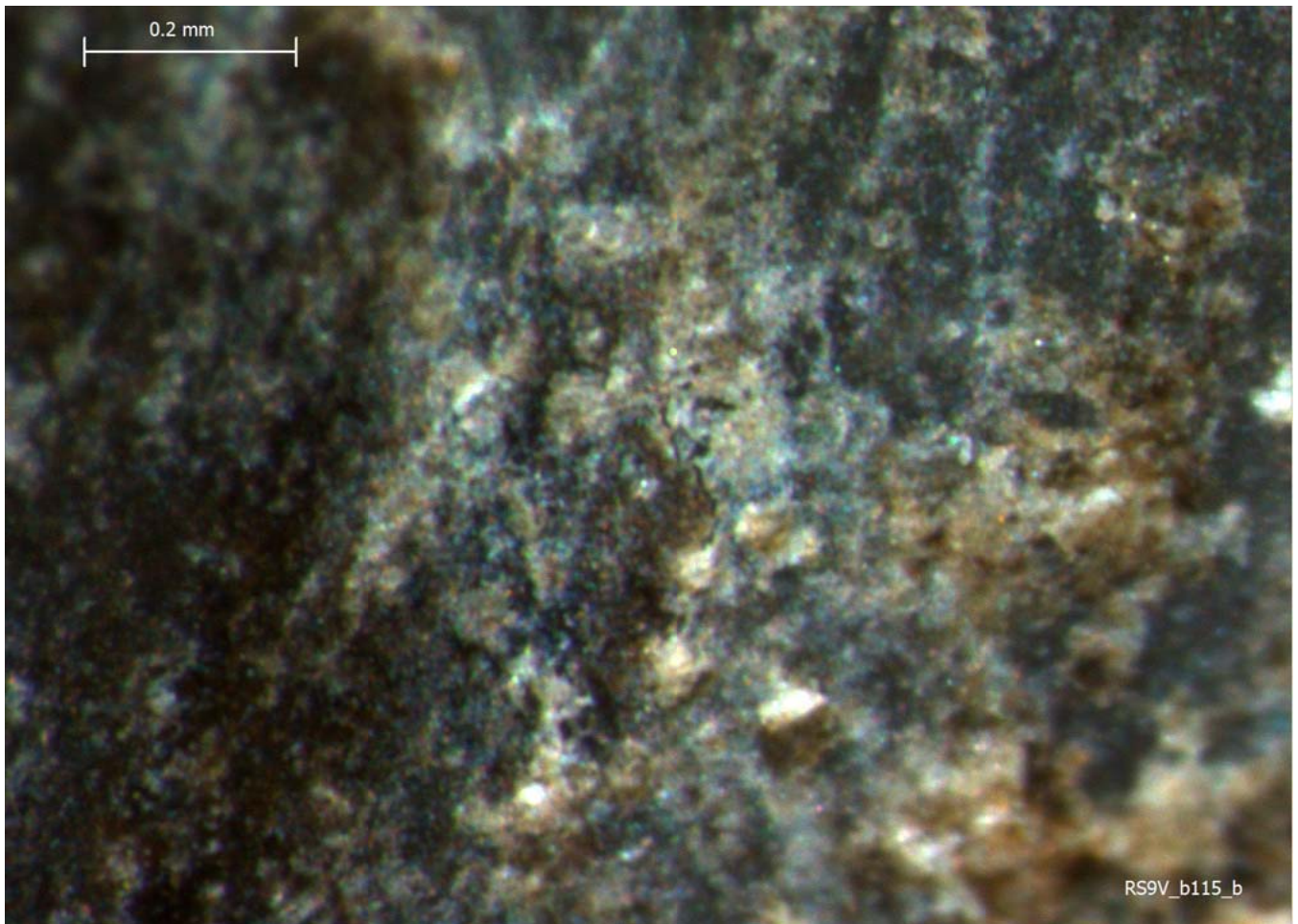
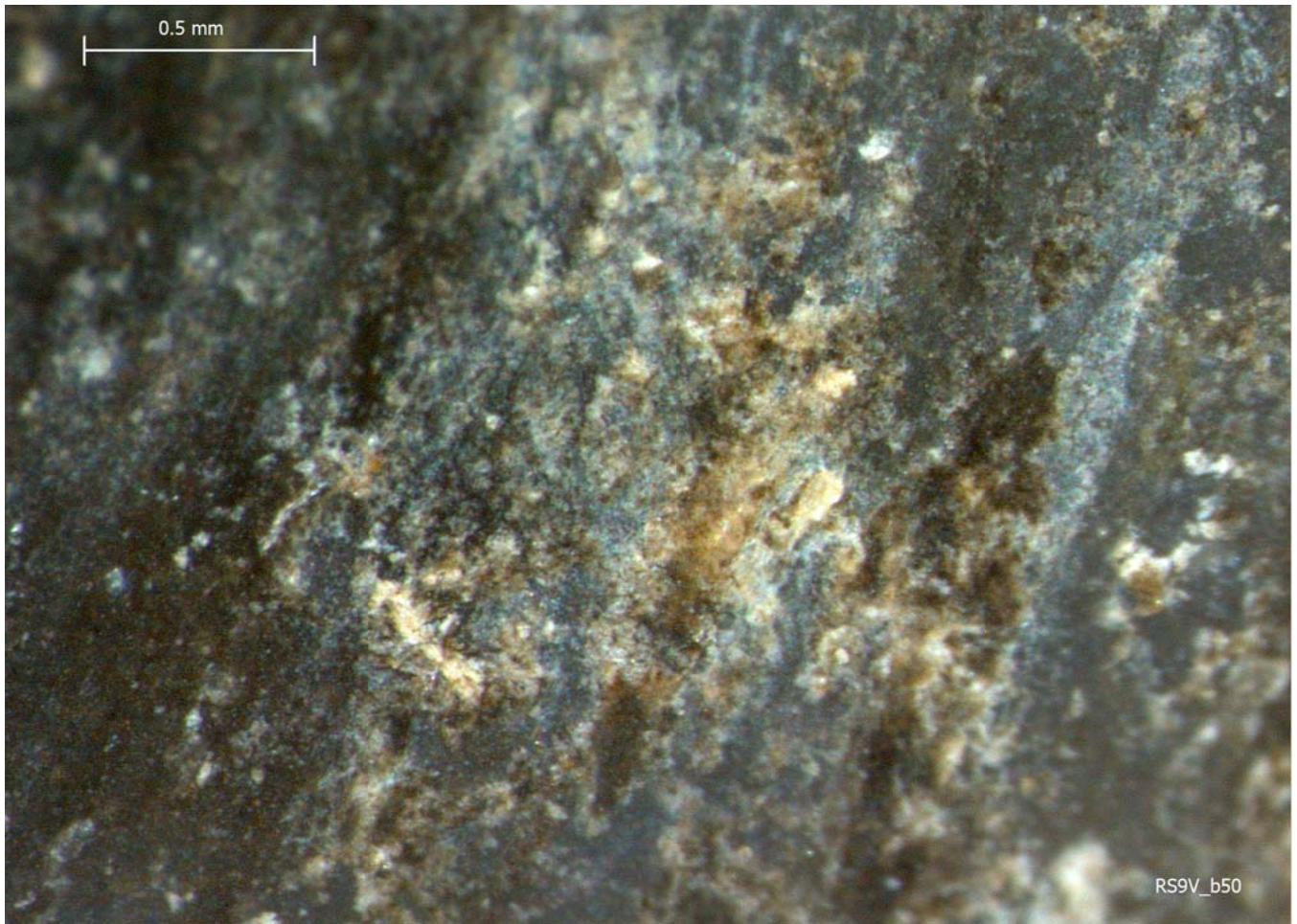




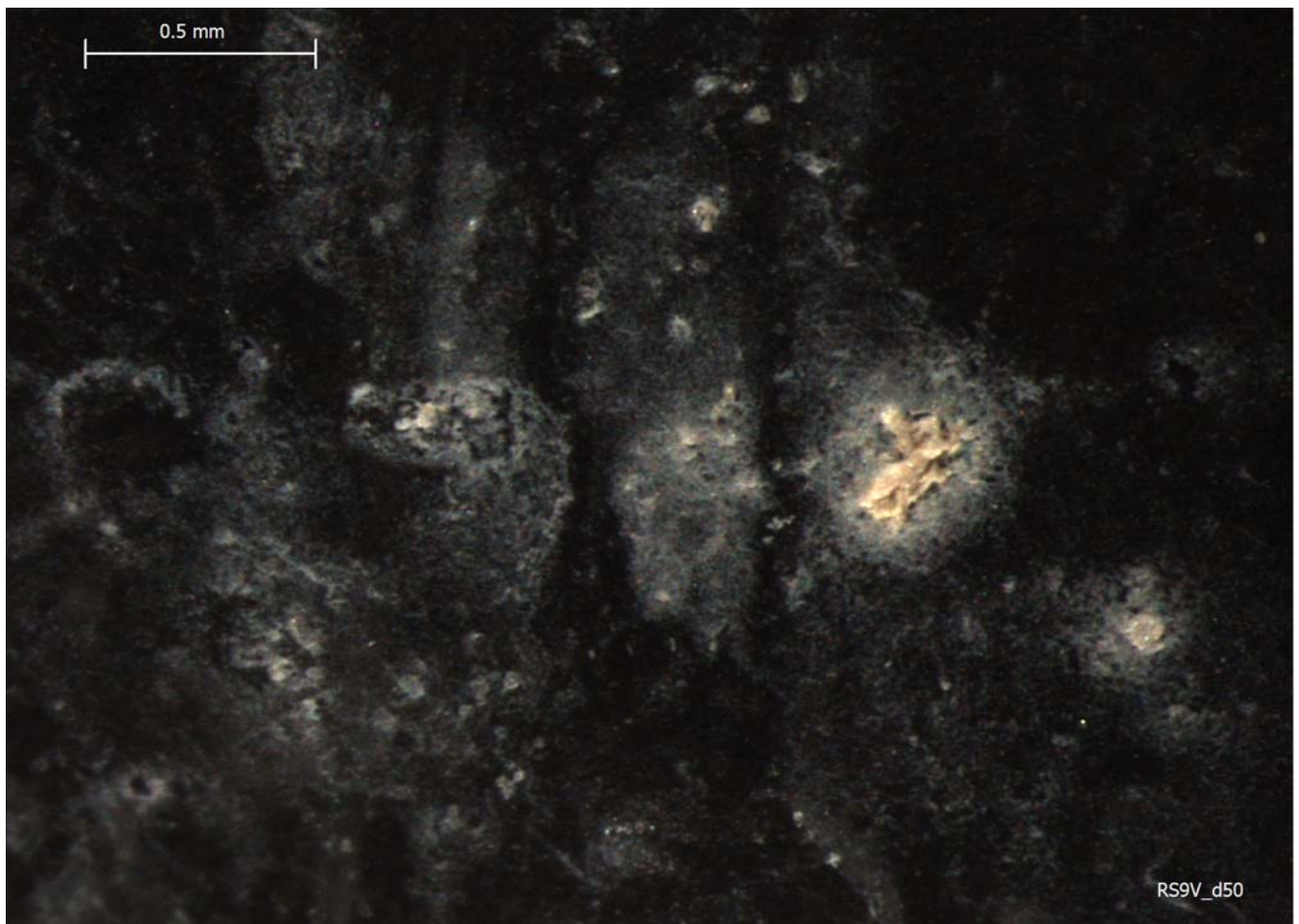
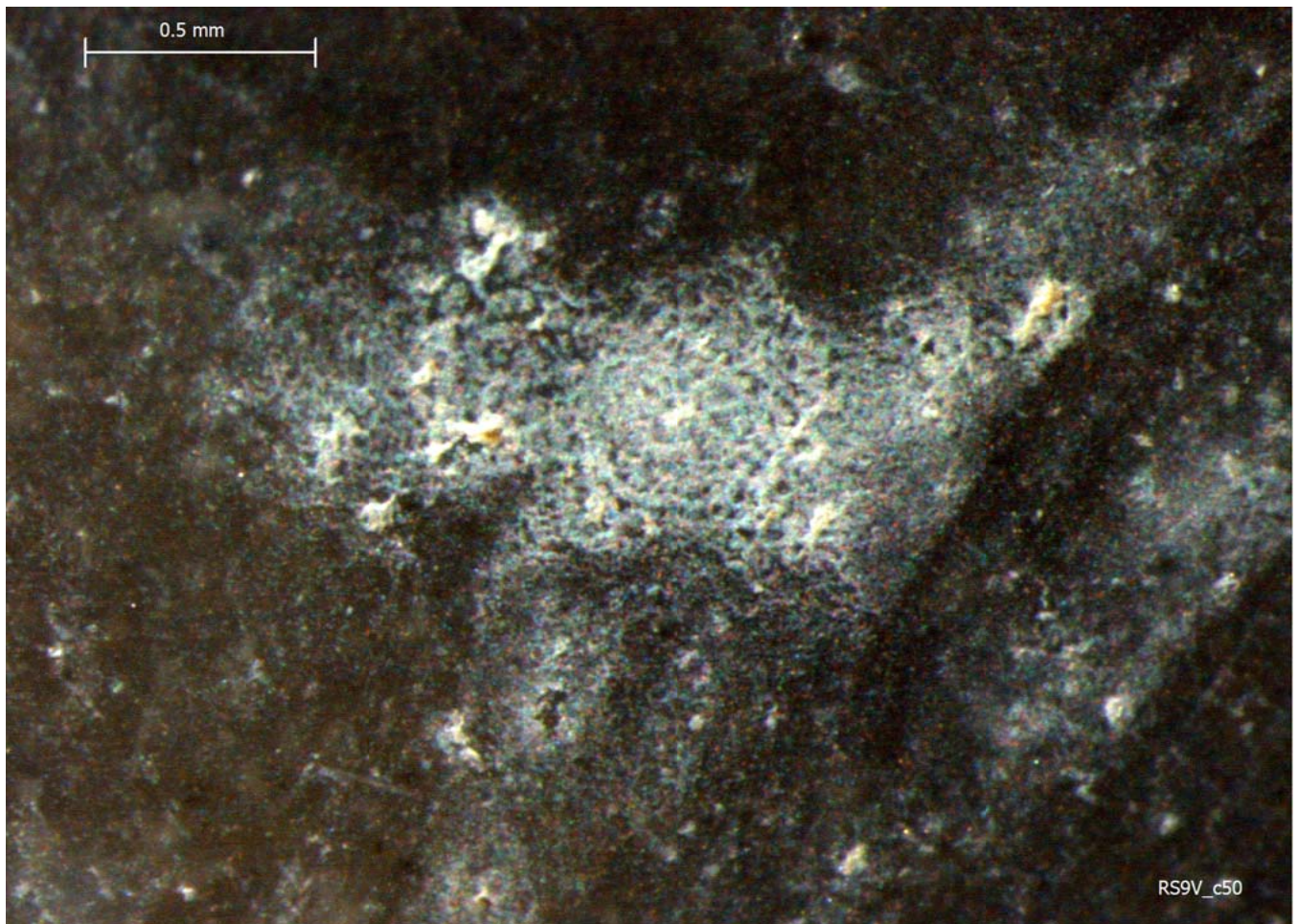




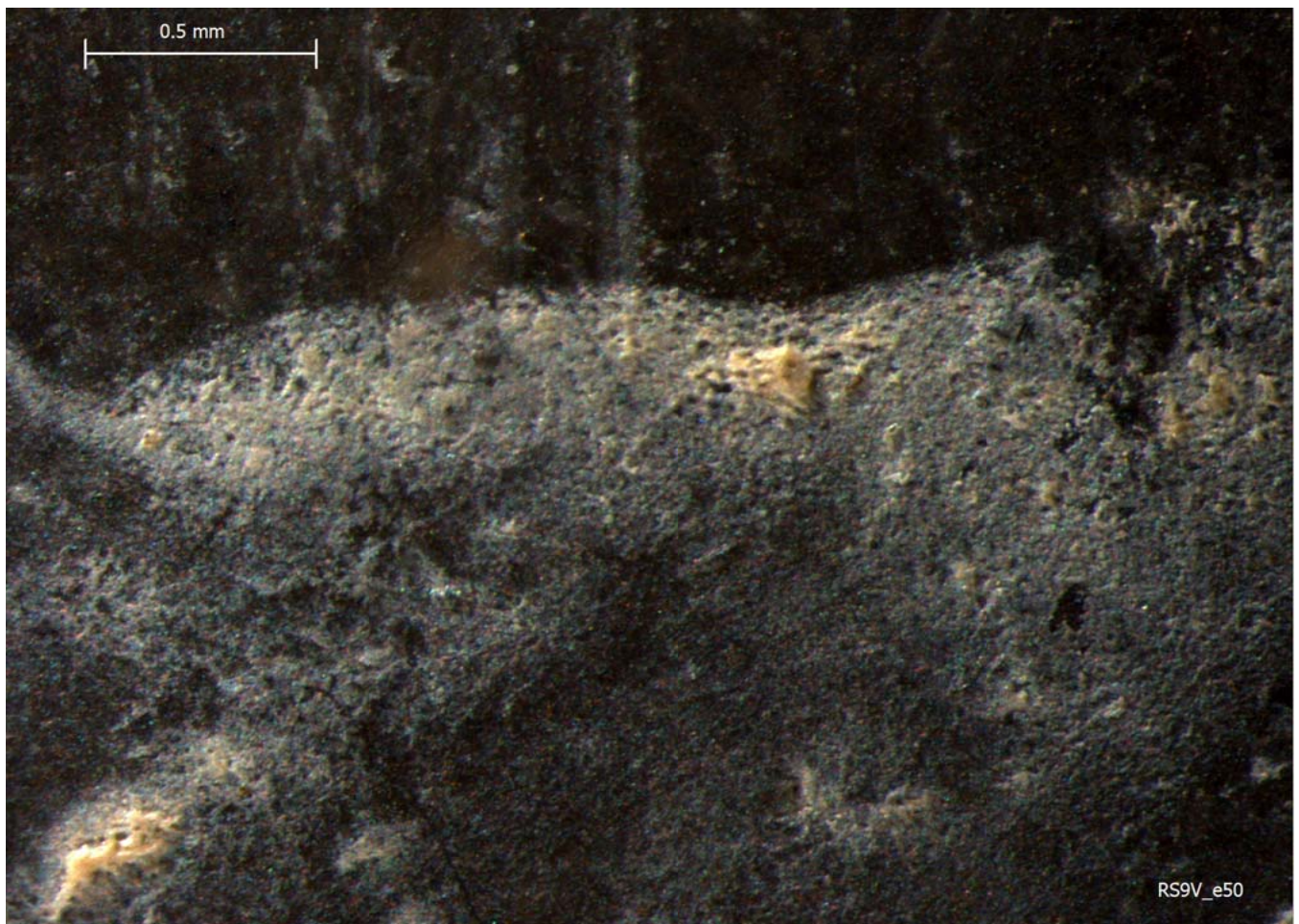
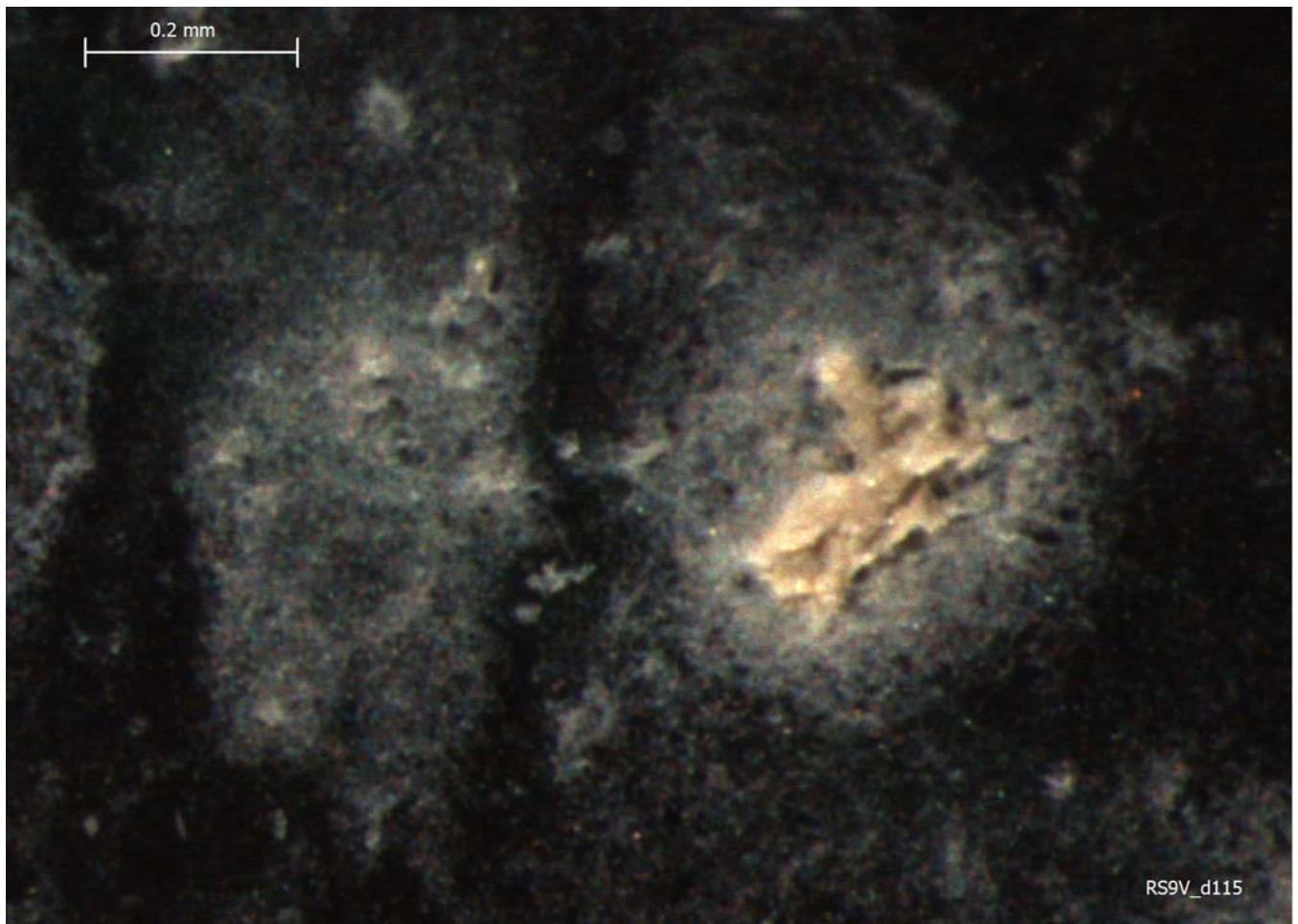




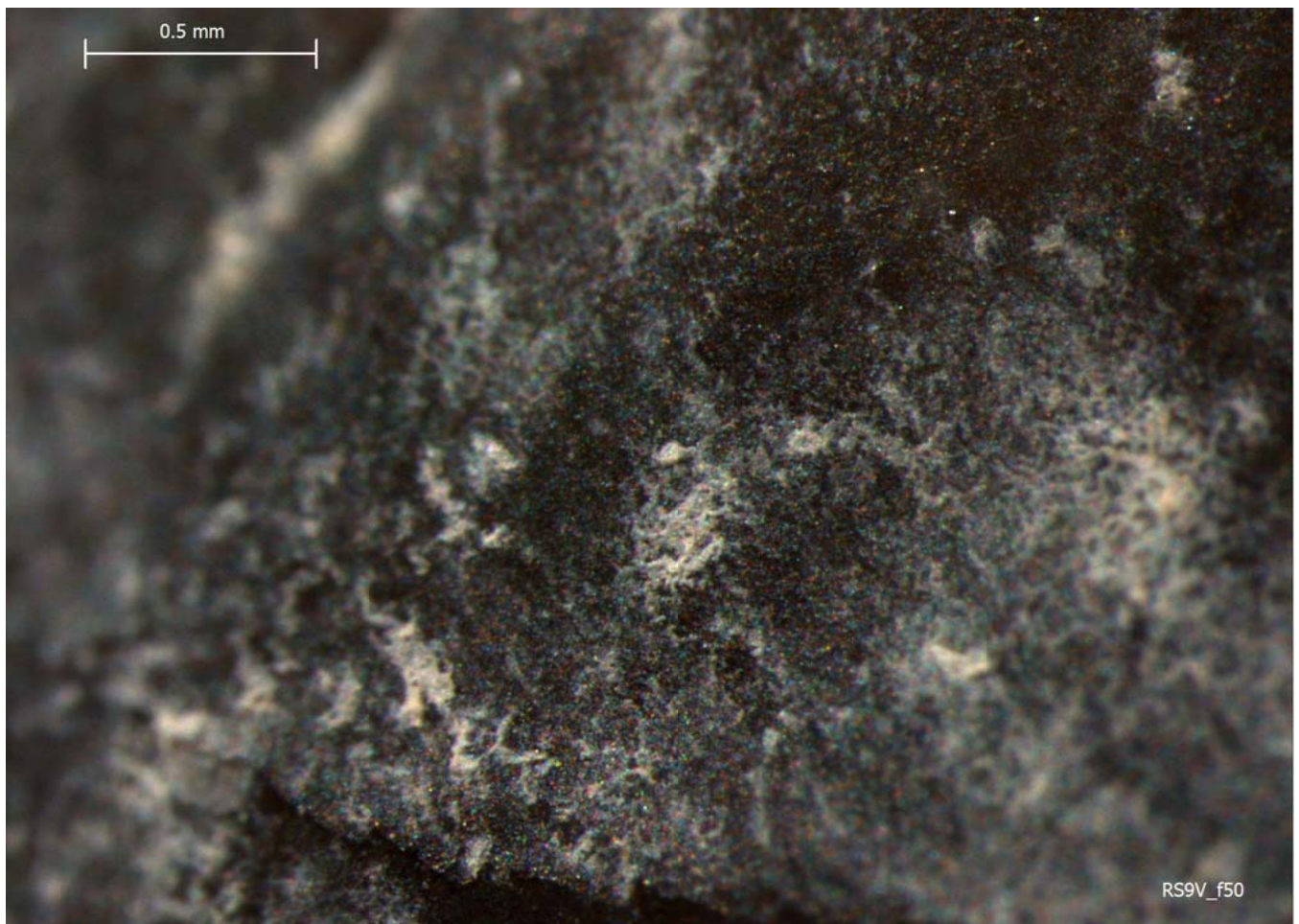
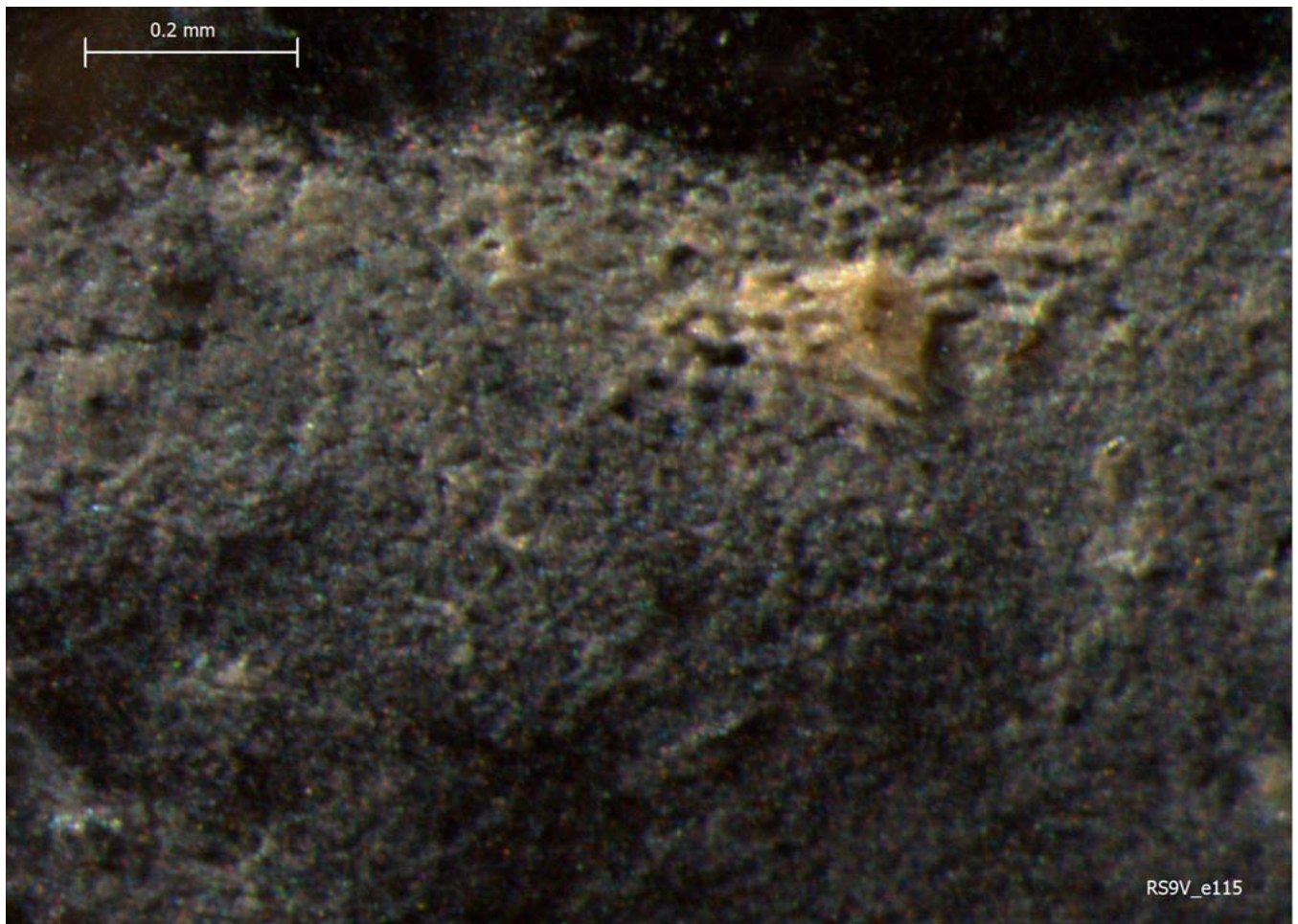




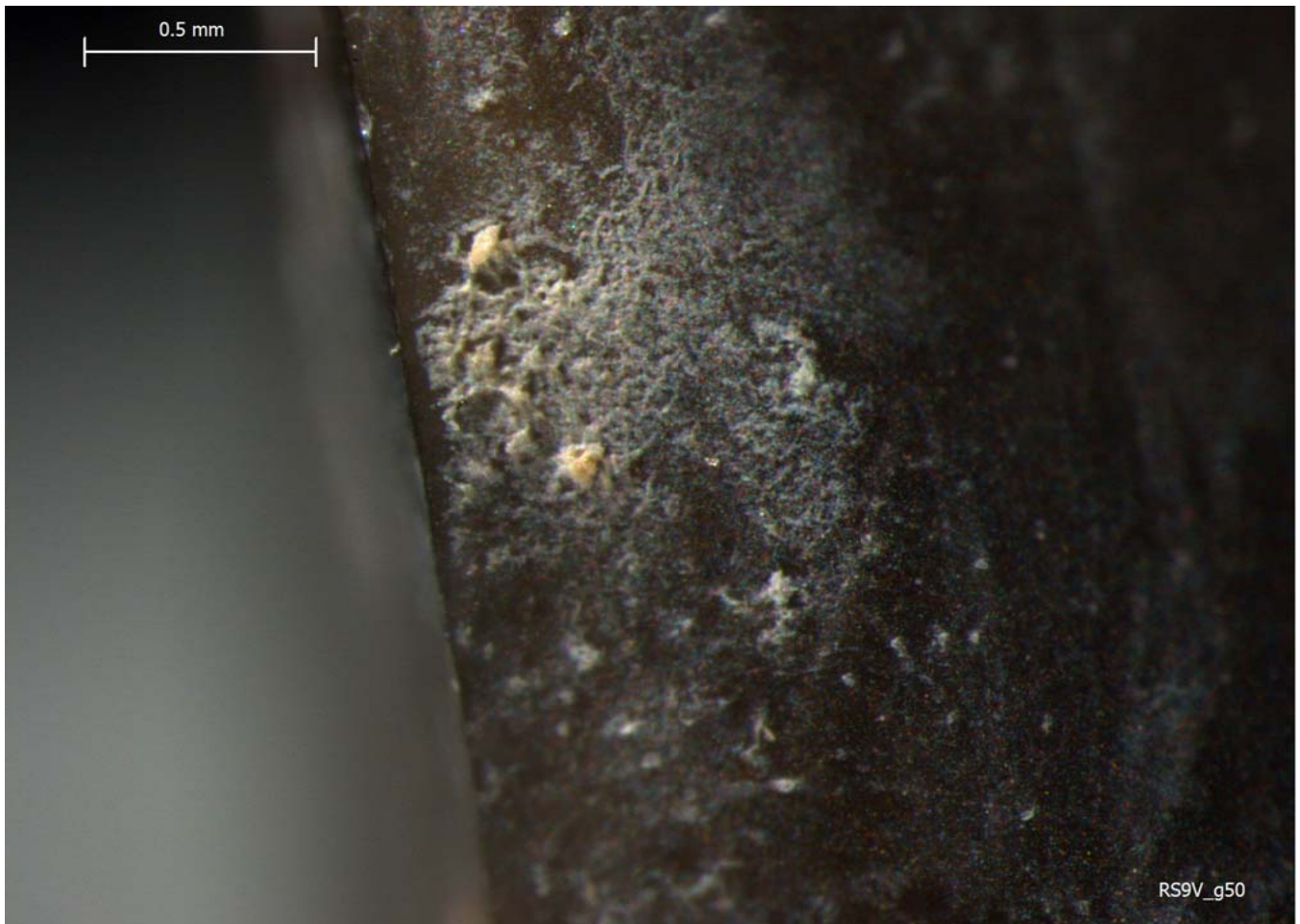
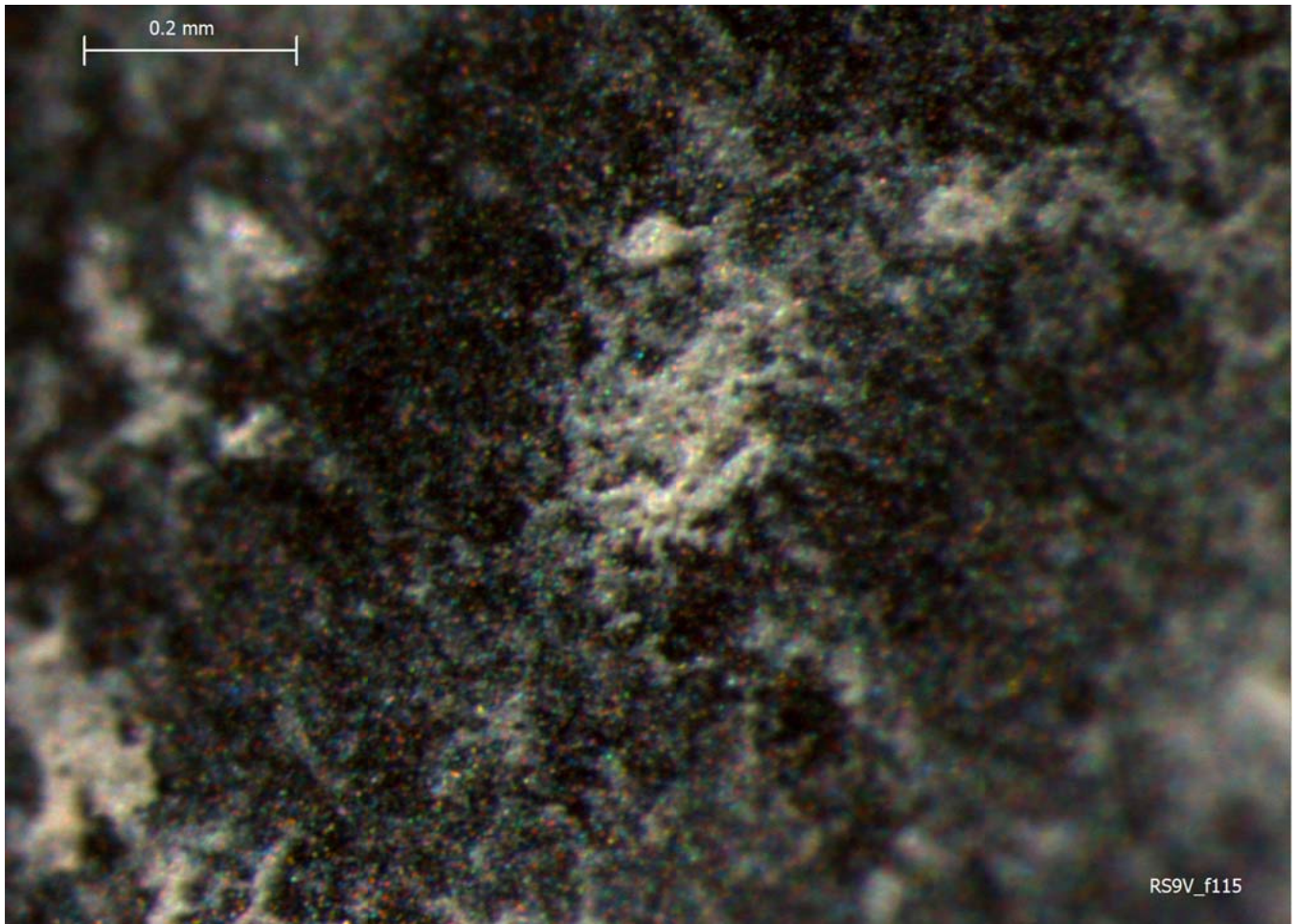




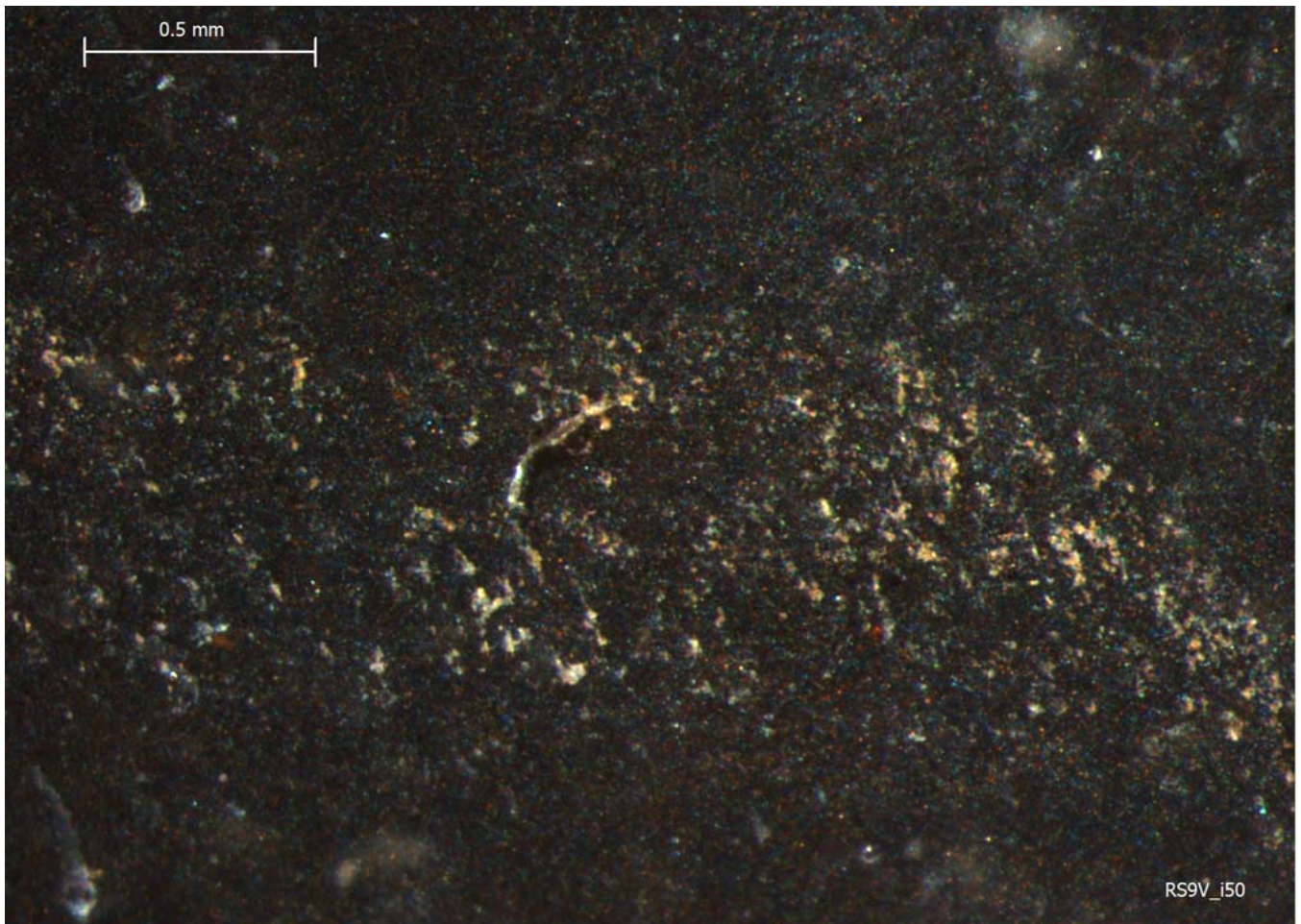
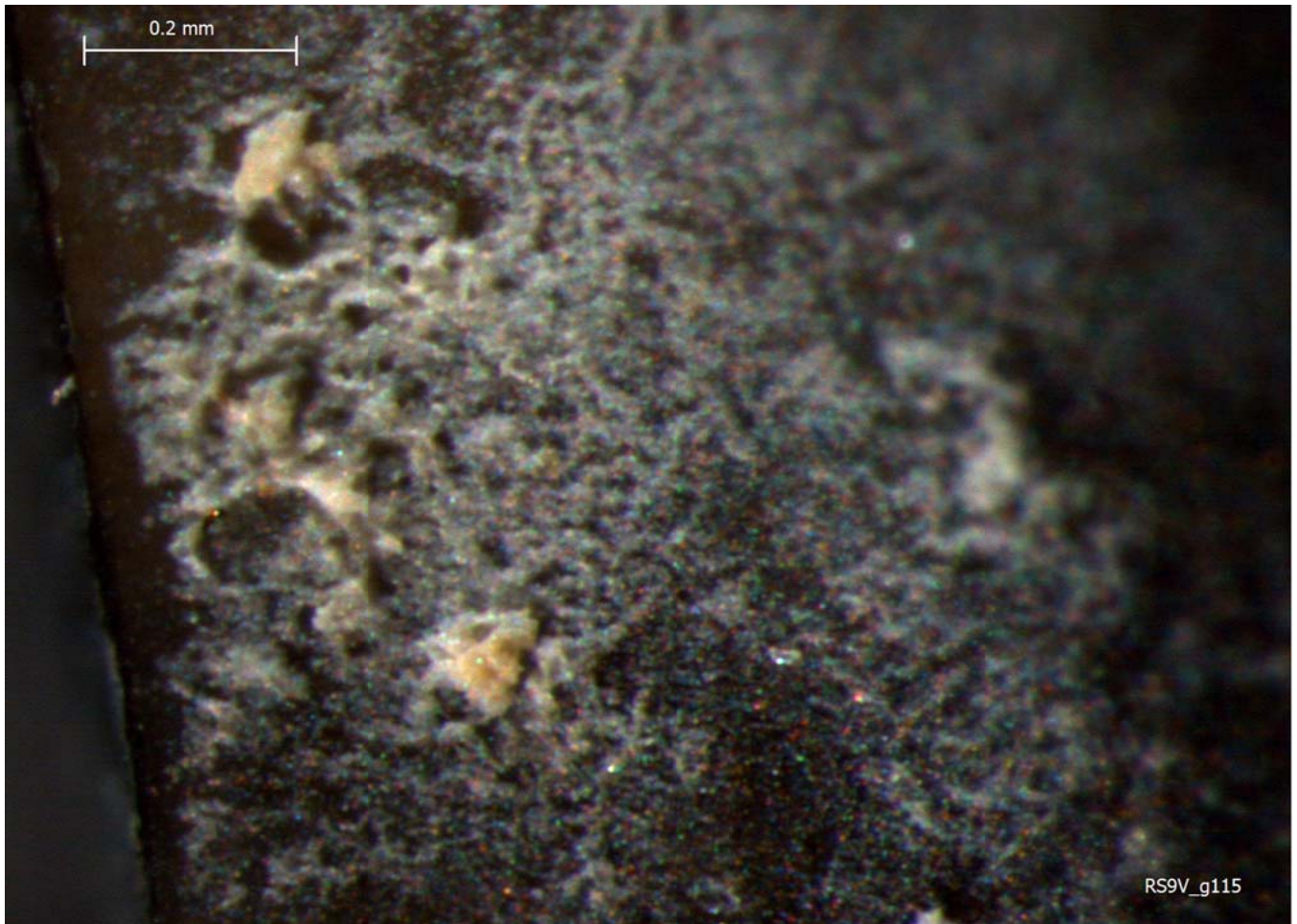




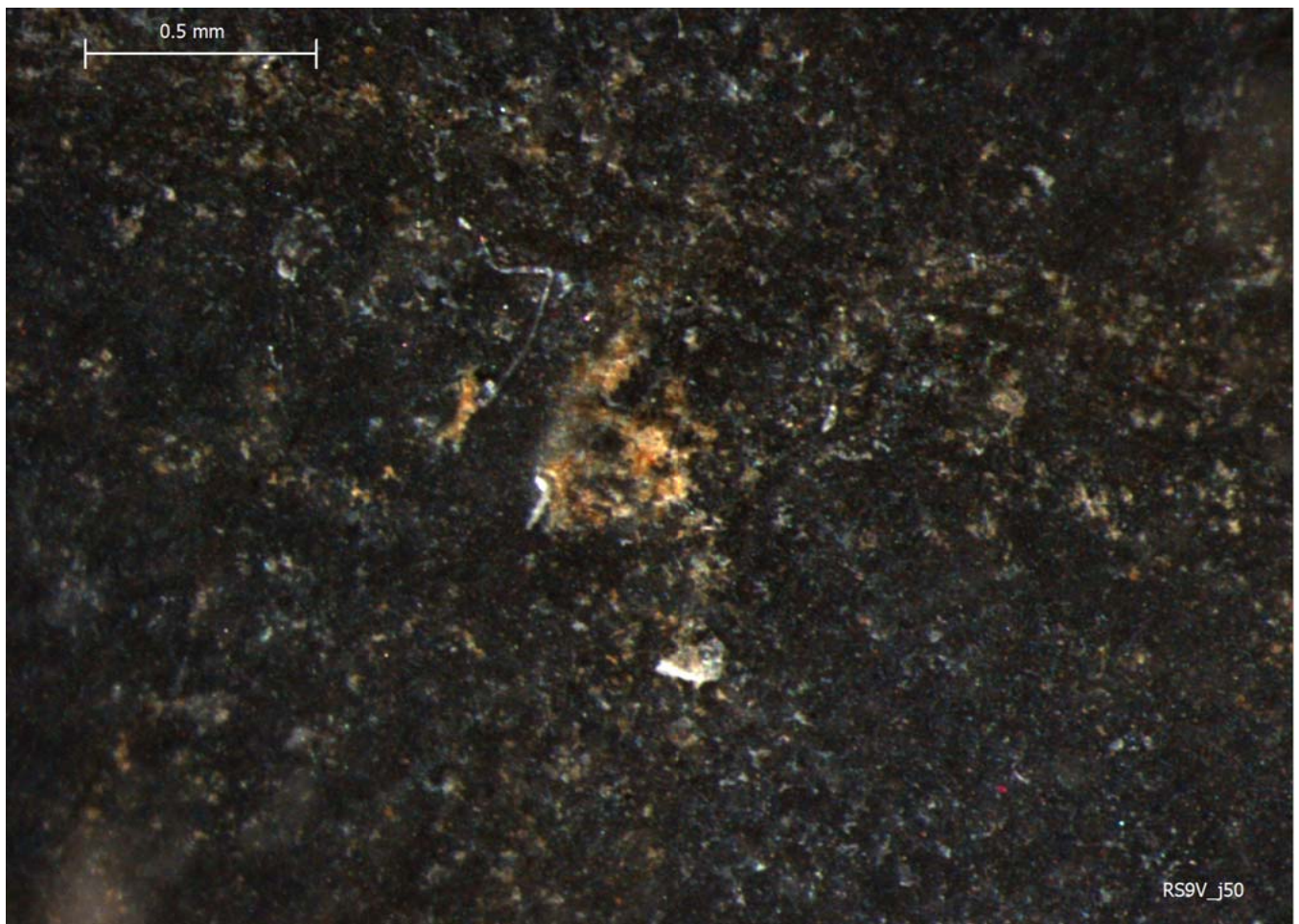
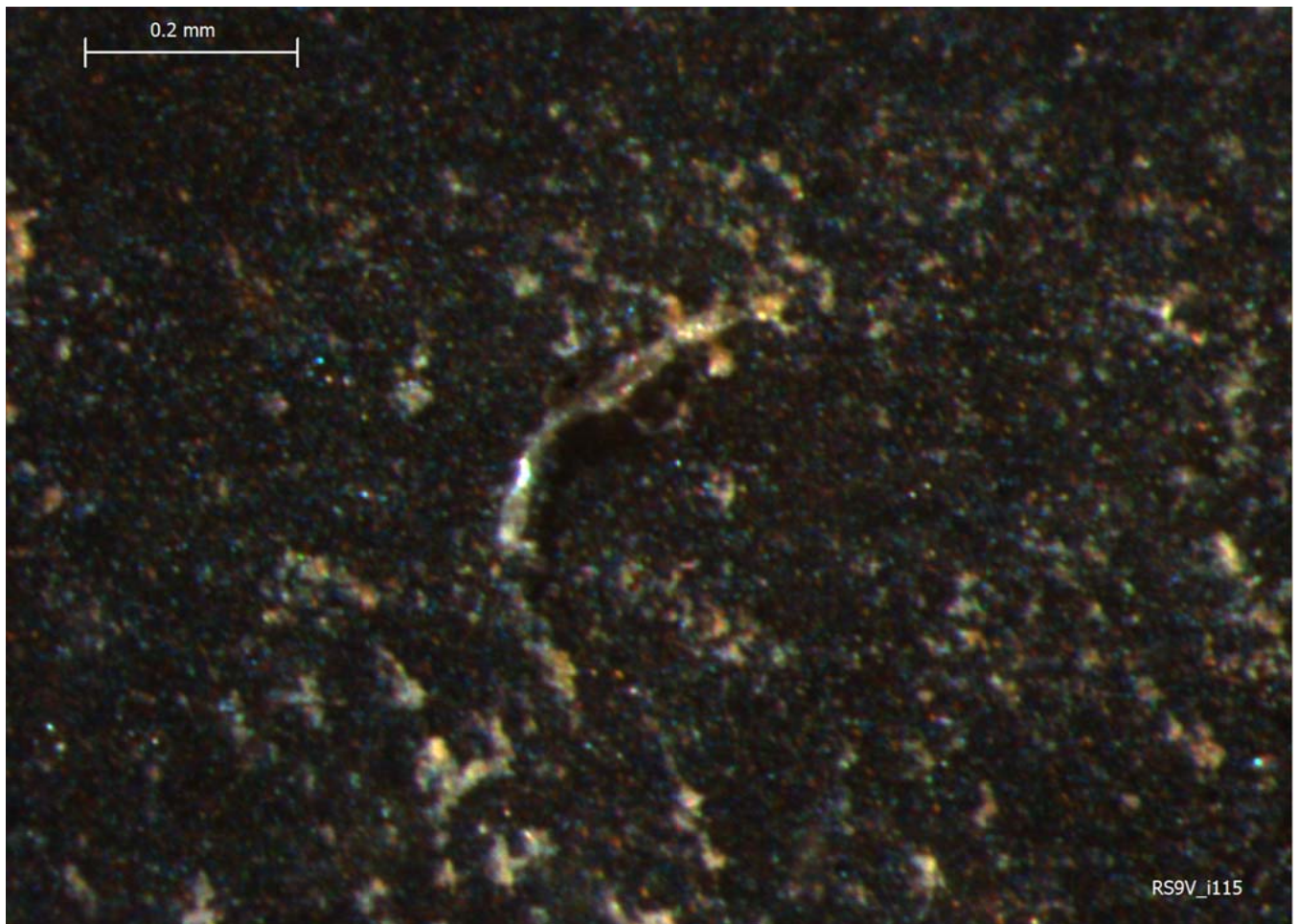




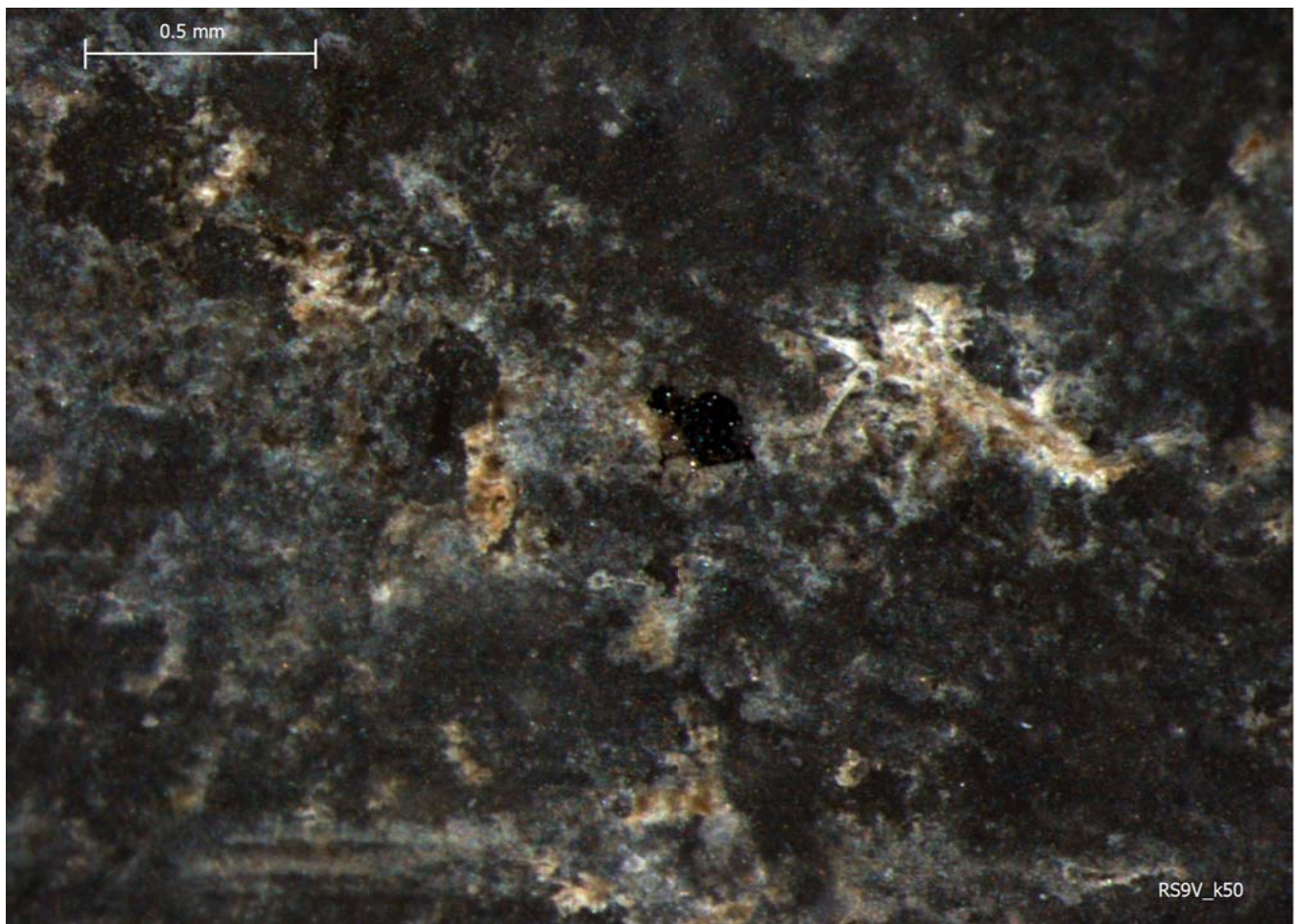
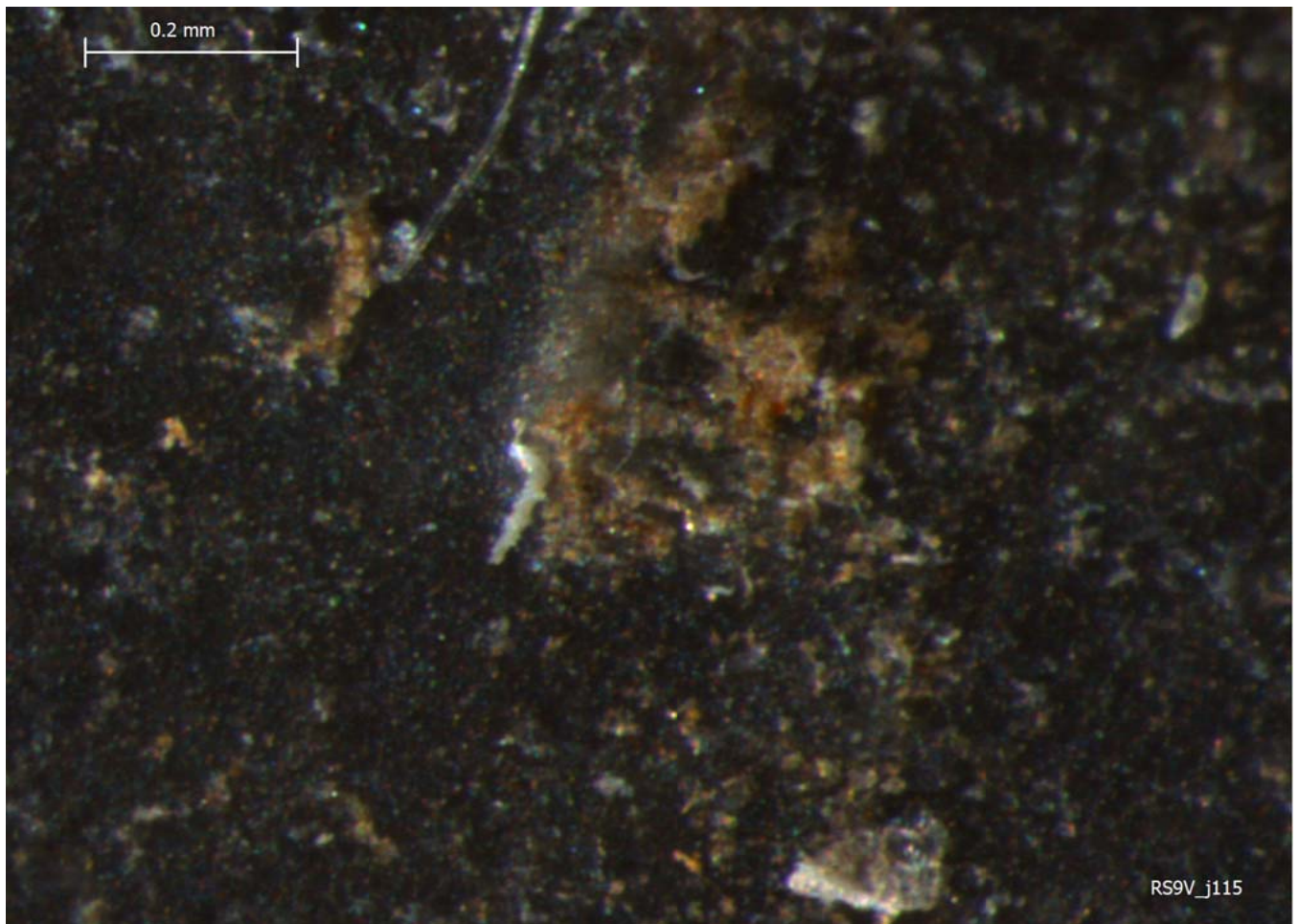




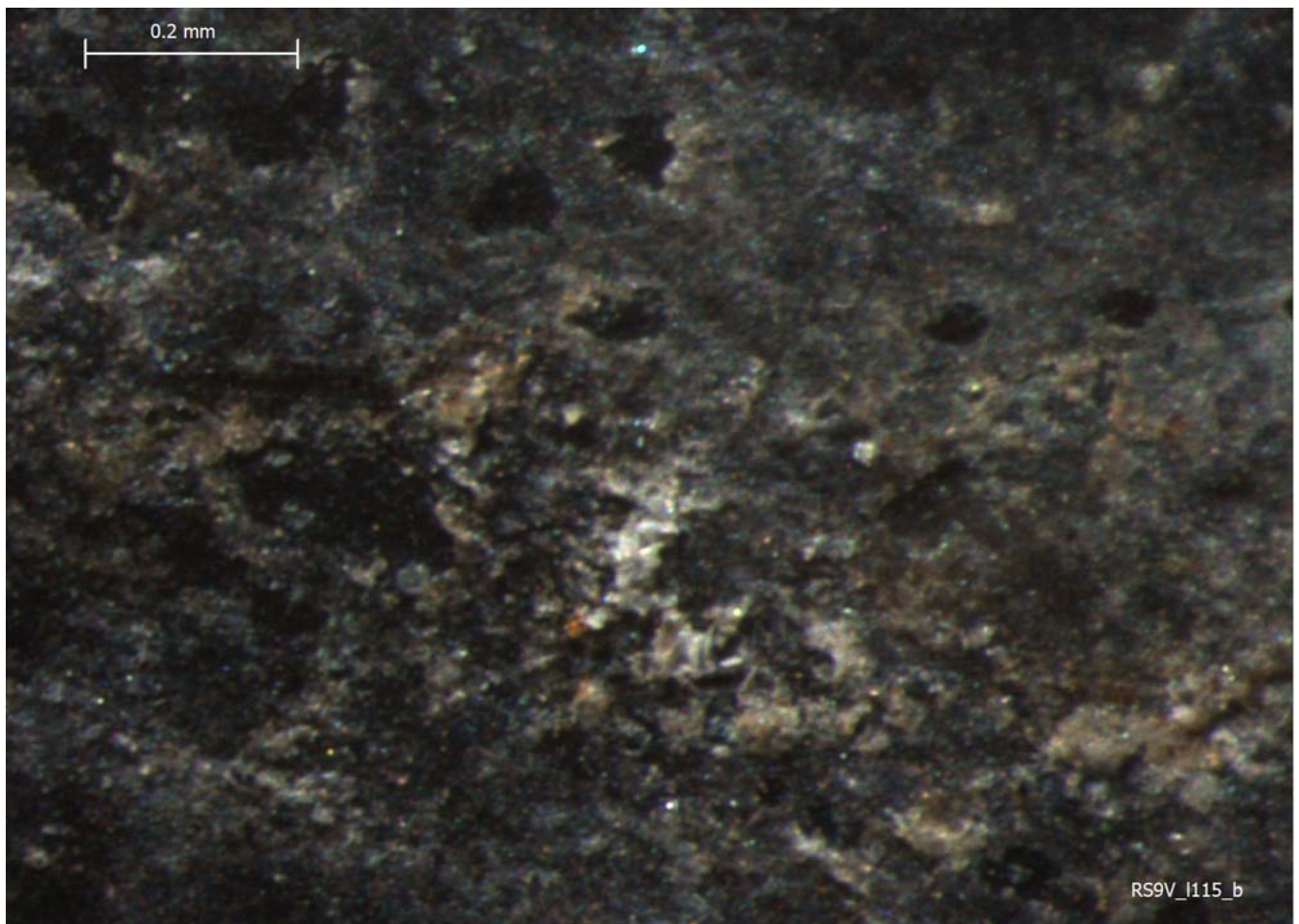
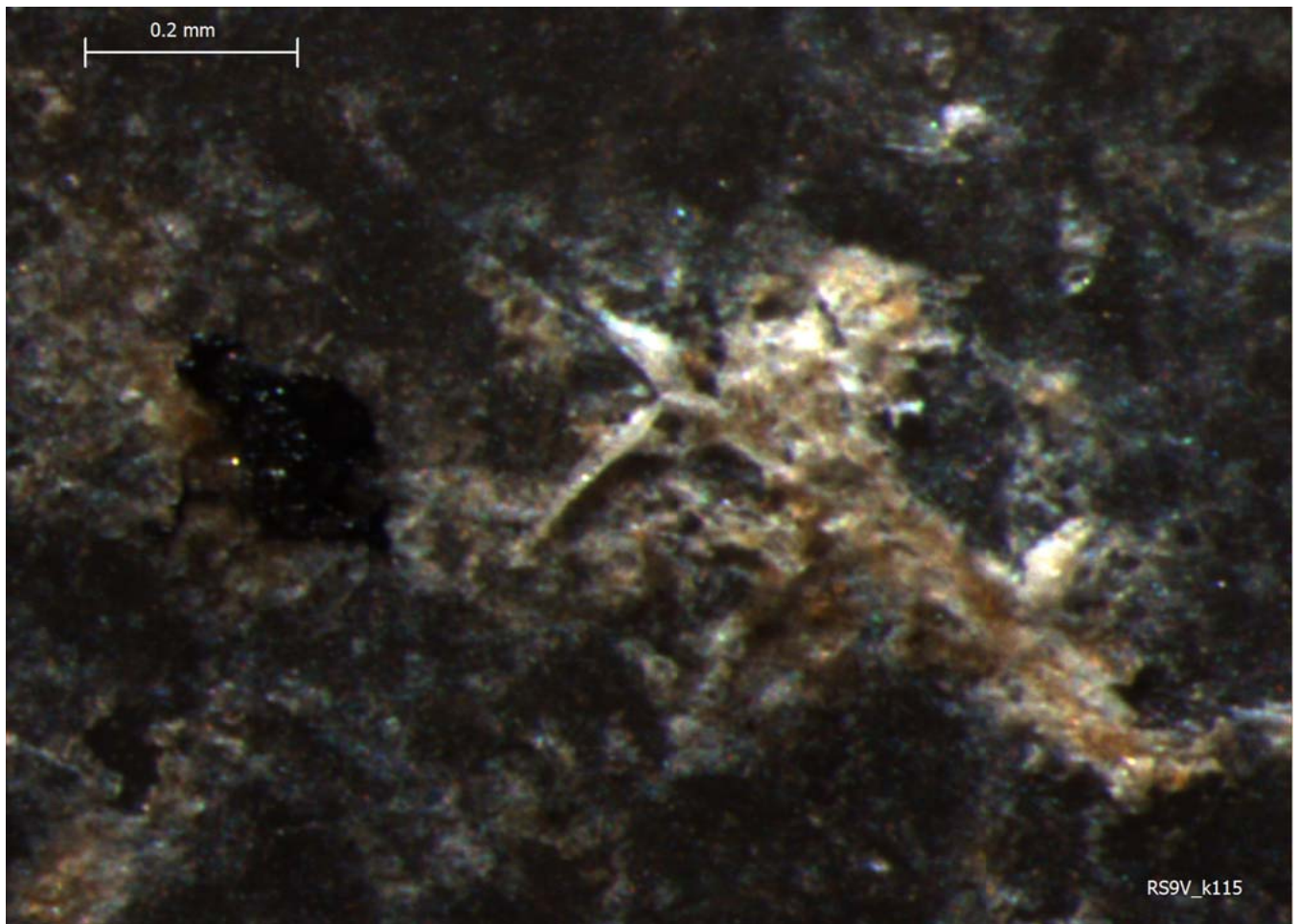




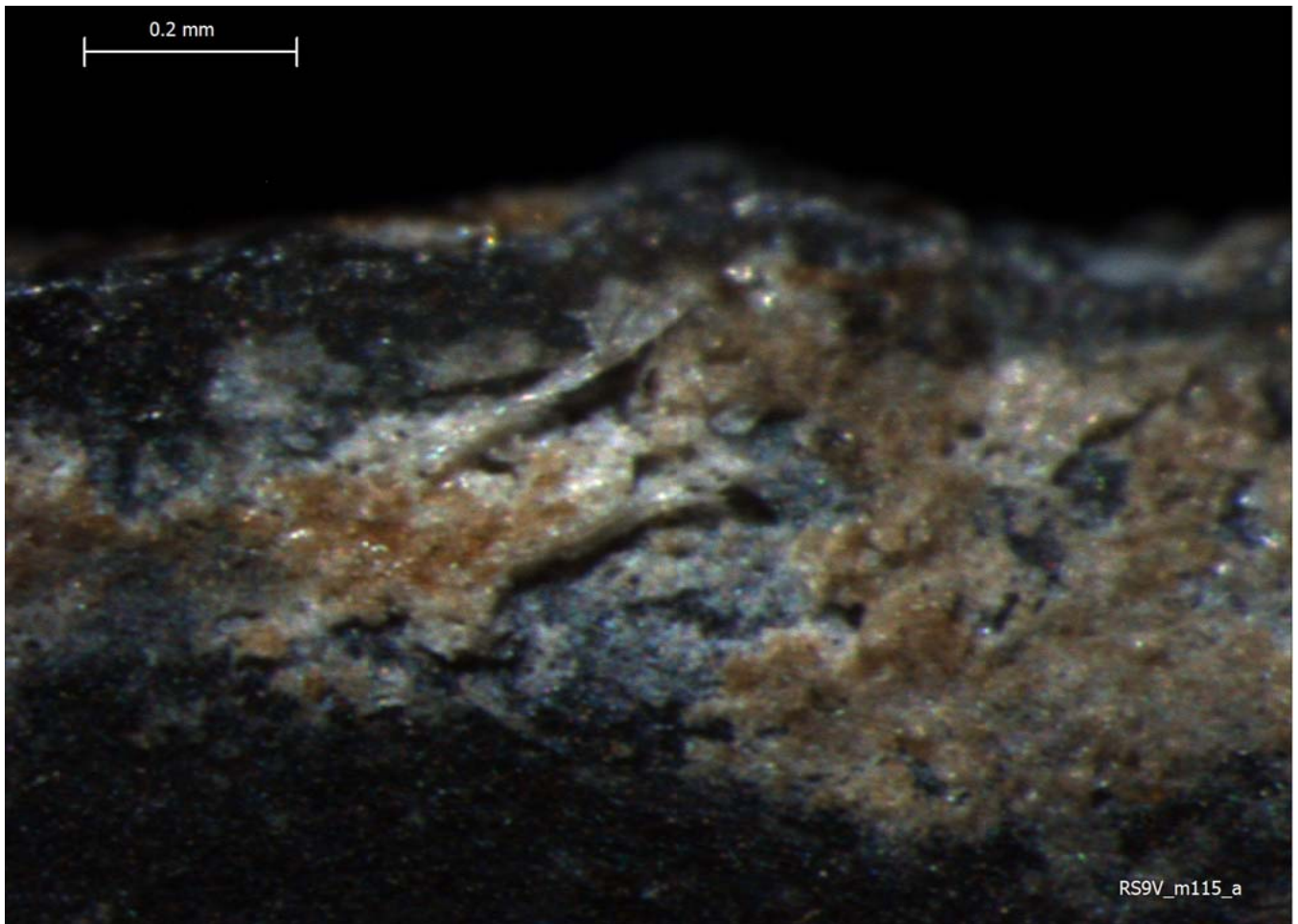
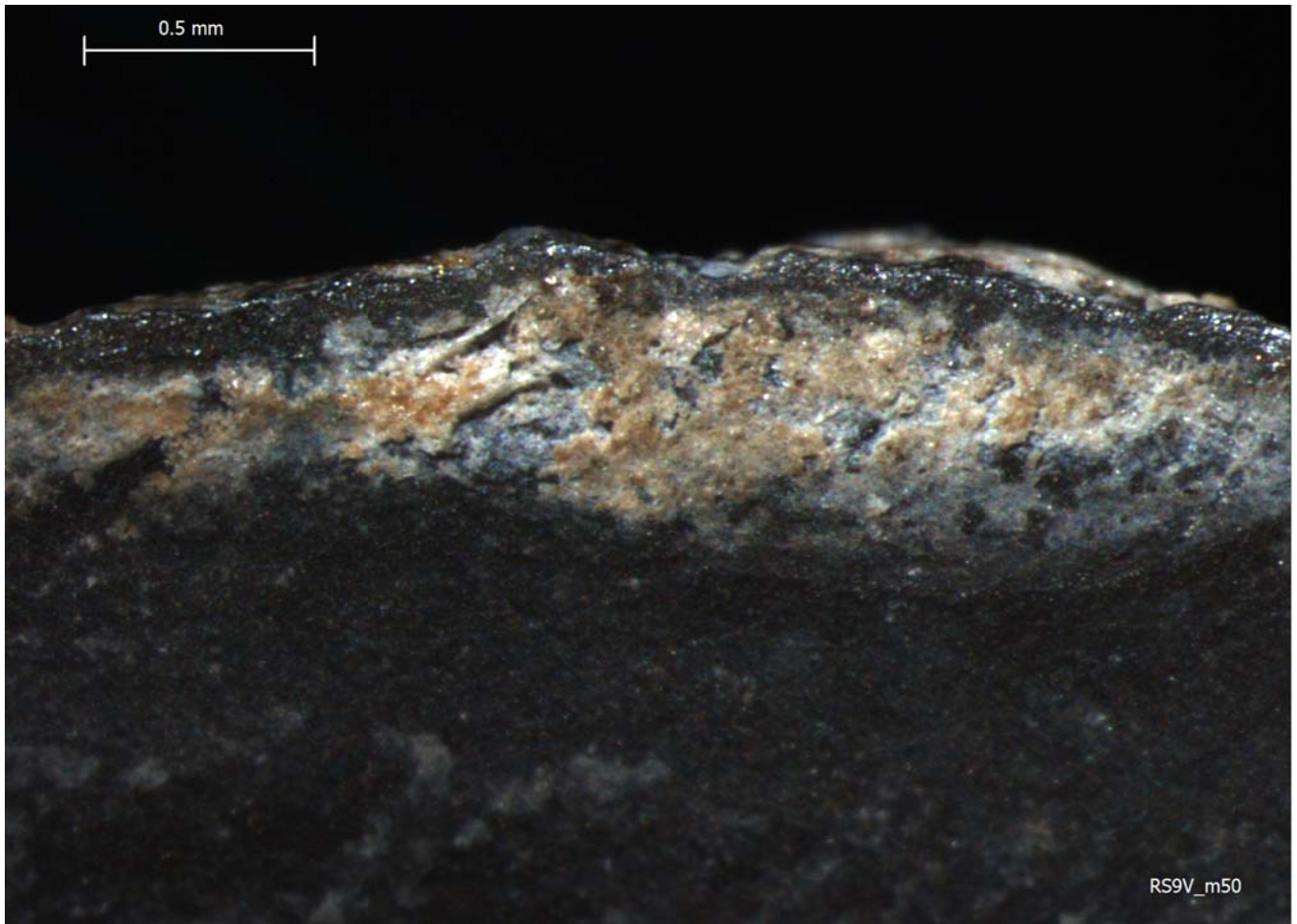












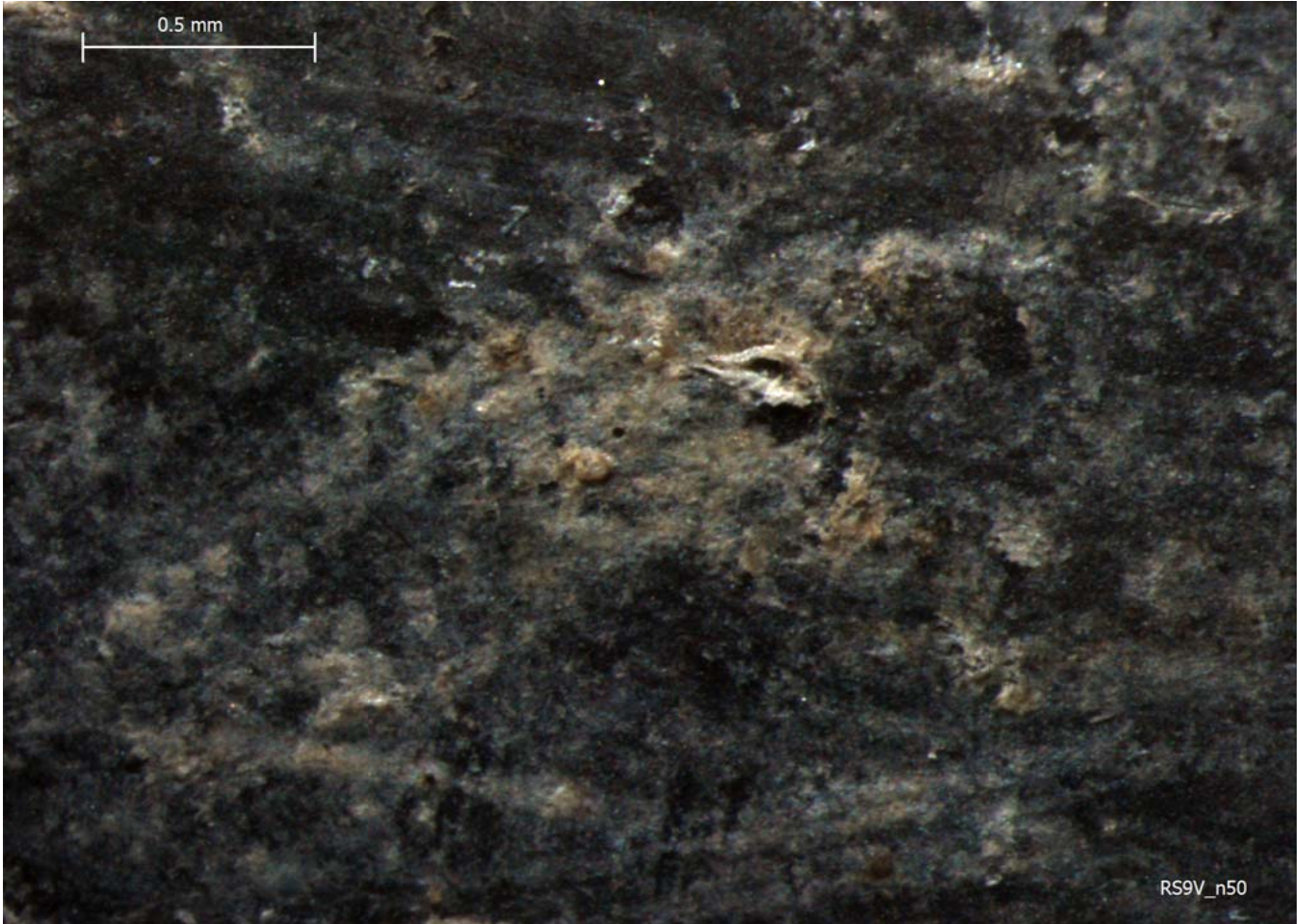


0.2 mm



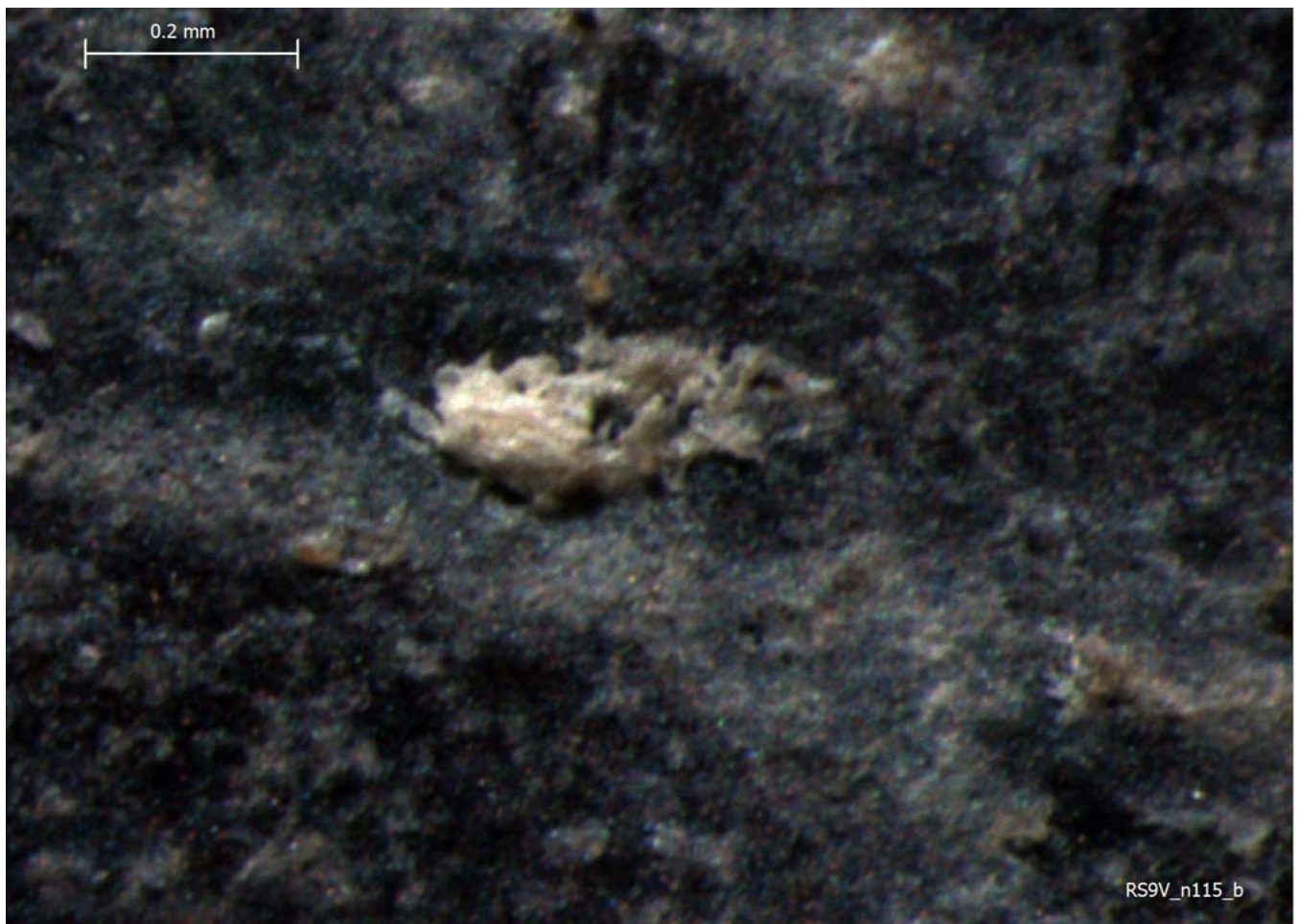
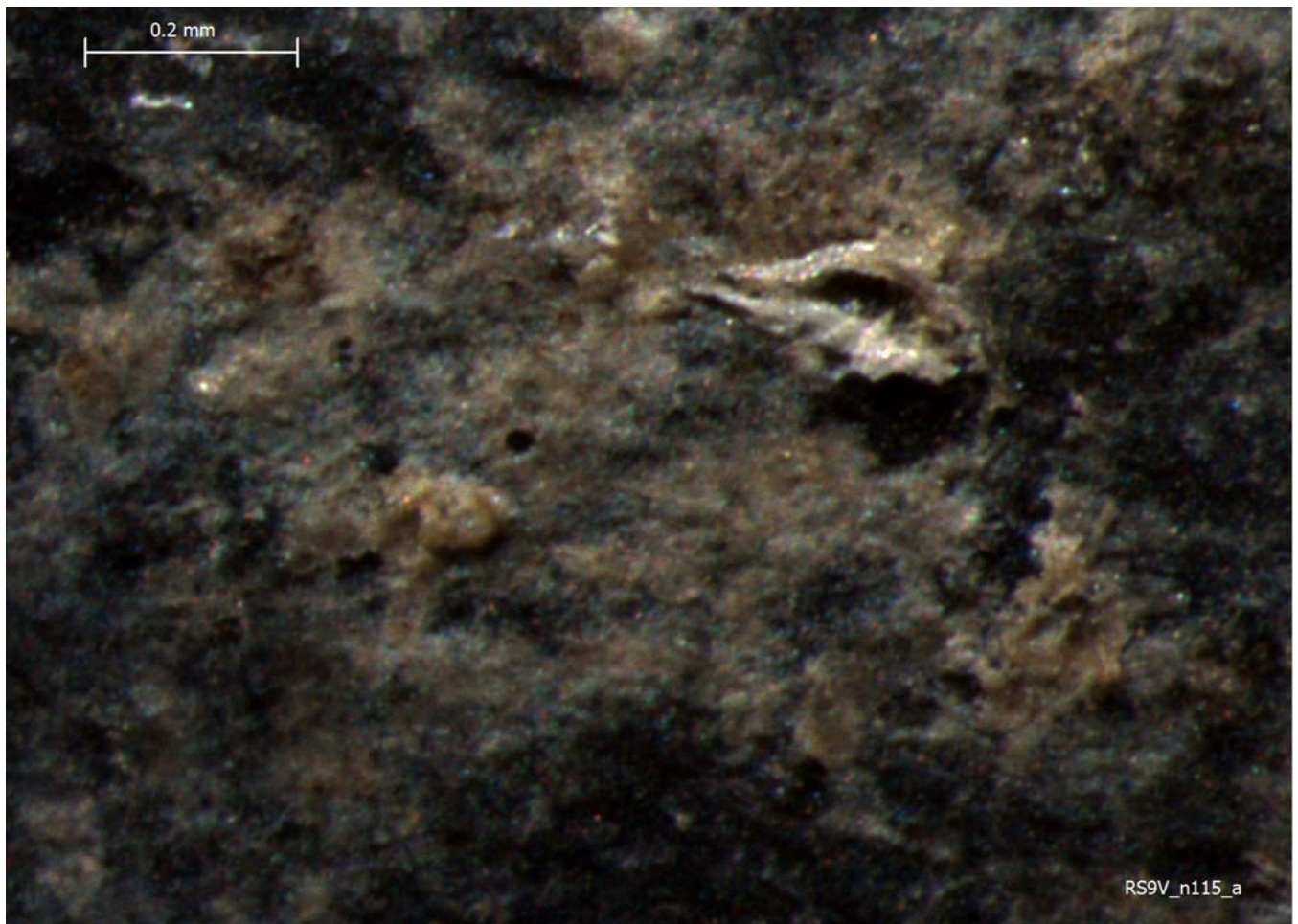
RS9V\_m115\_b

0.5 mm

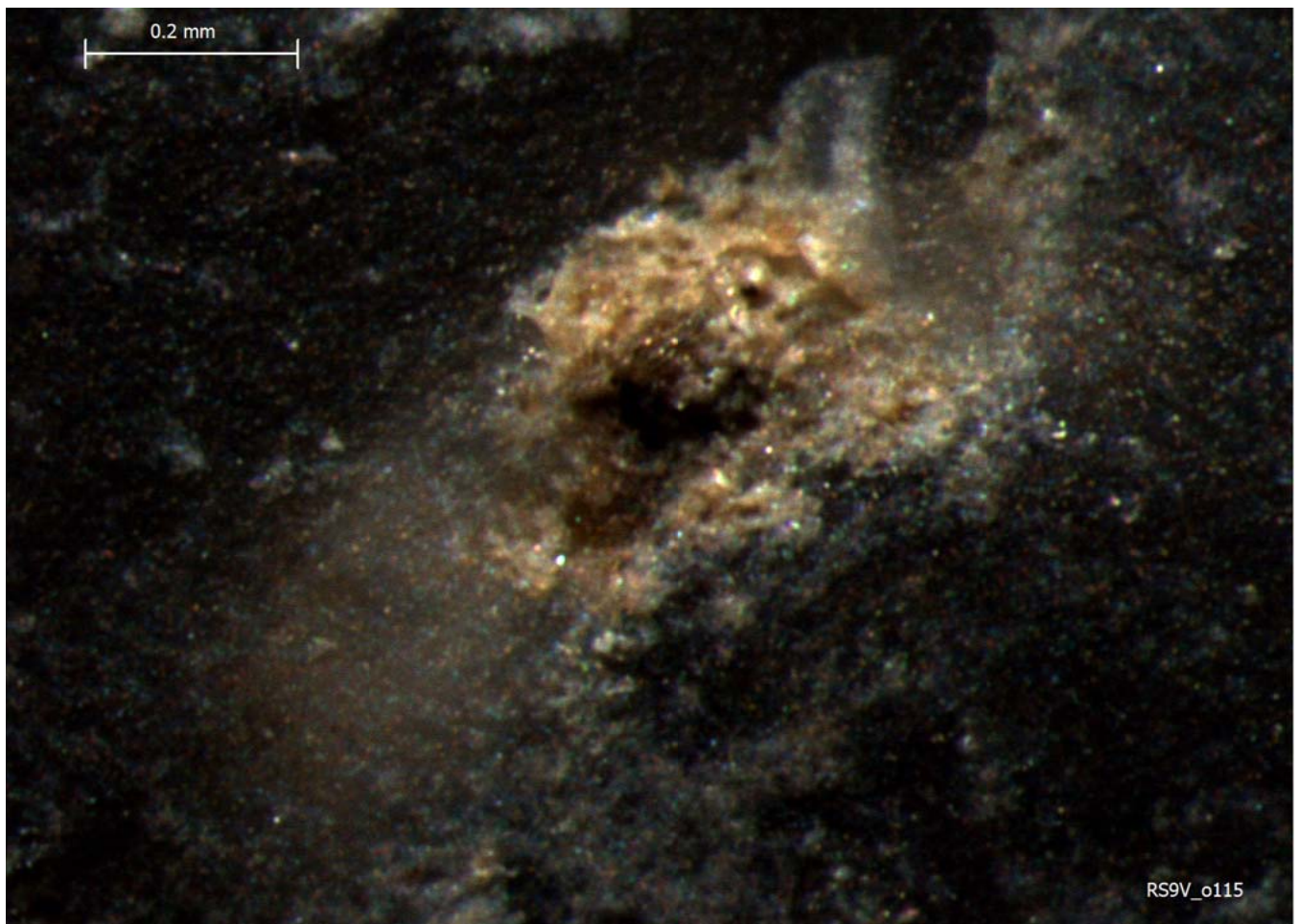
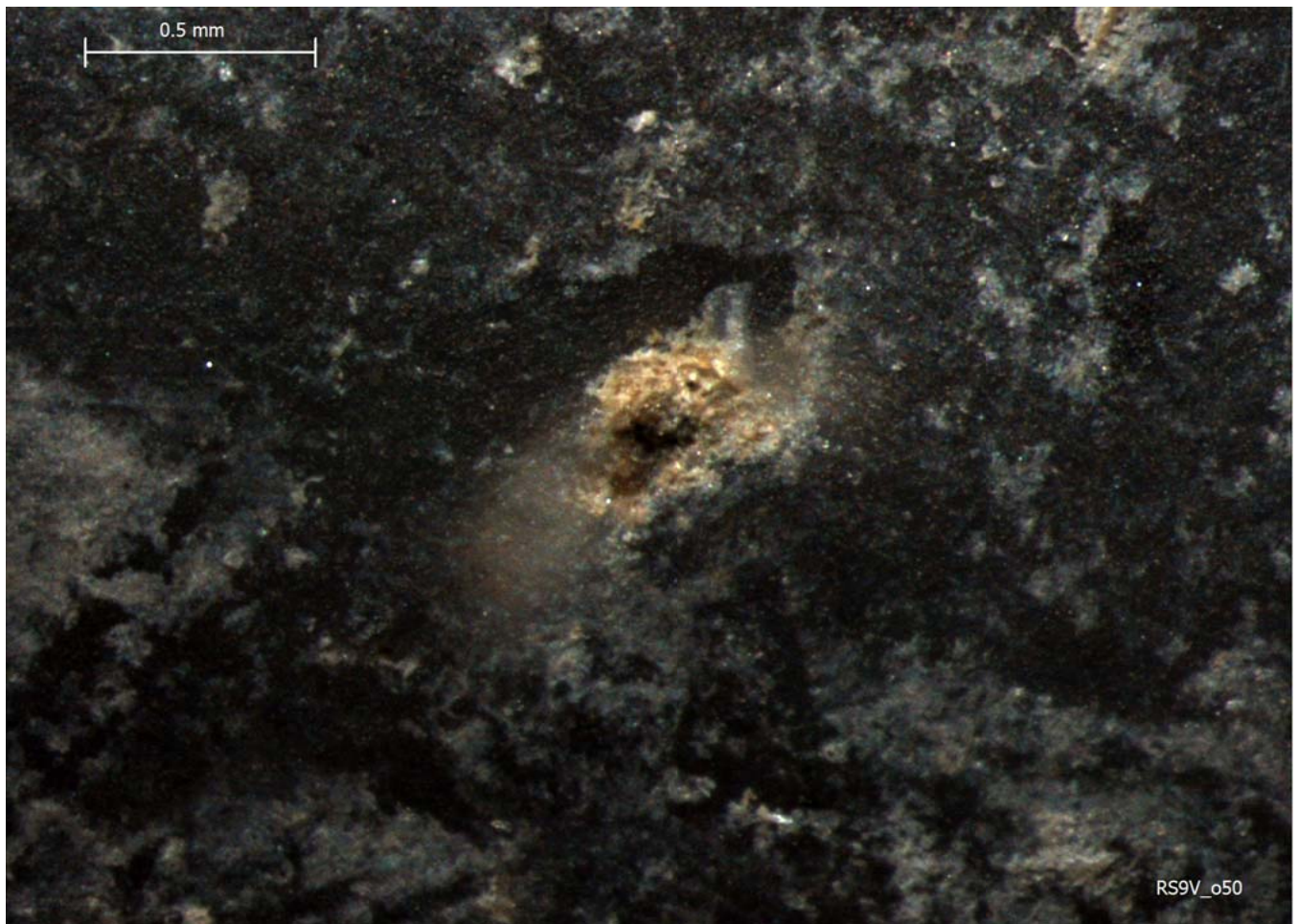


RS9V\_n50

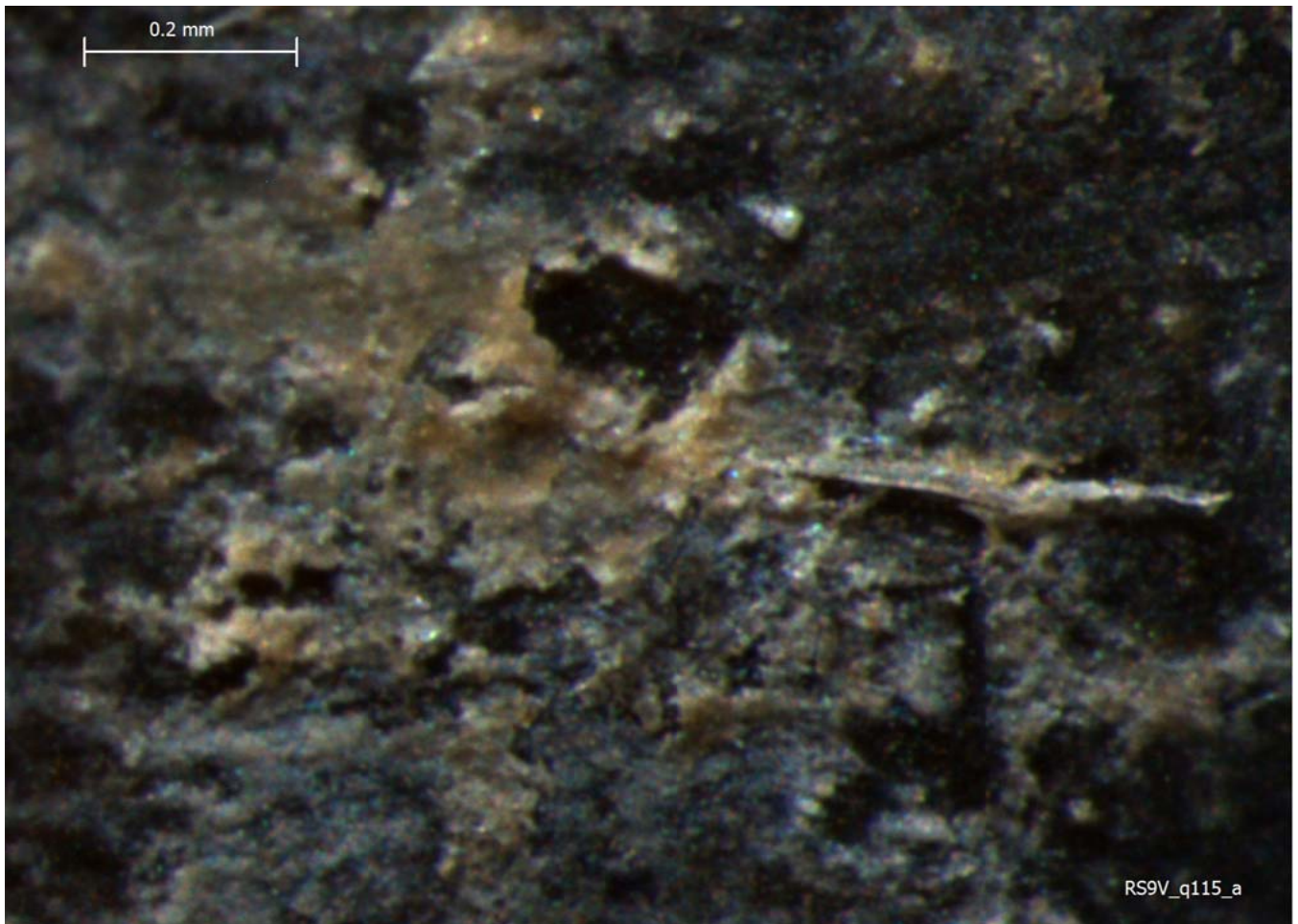
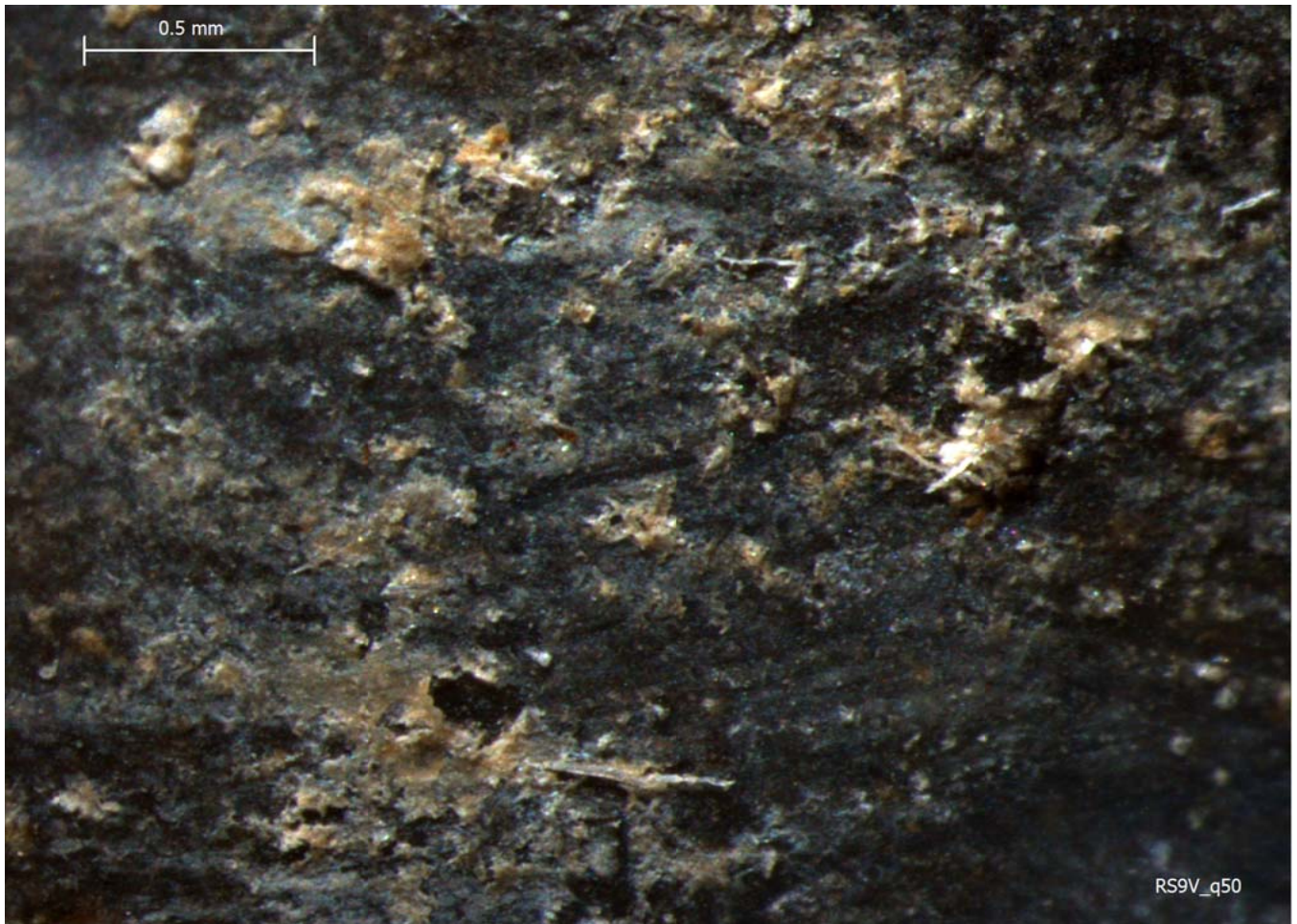




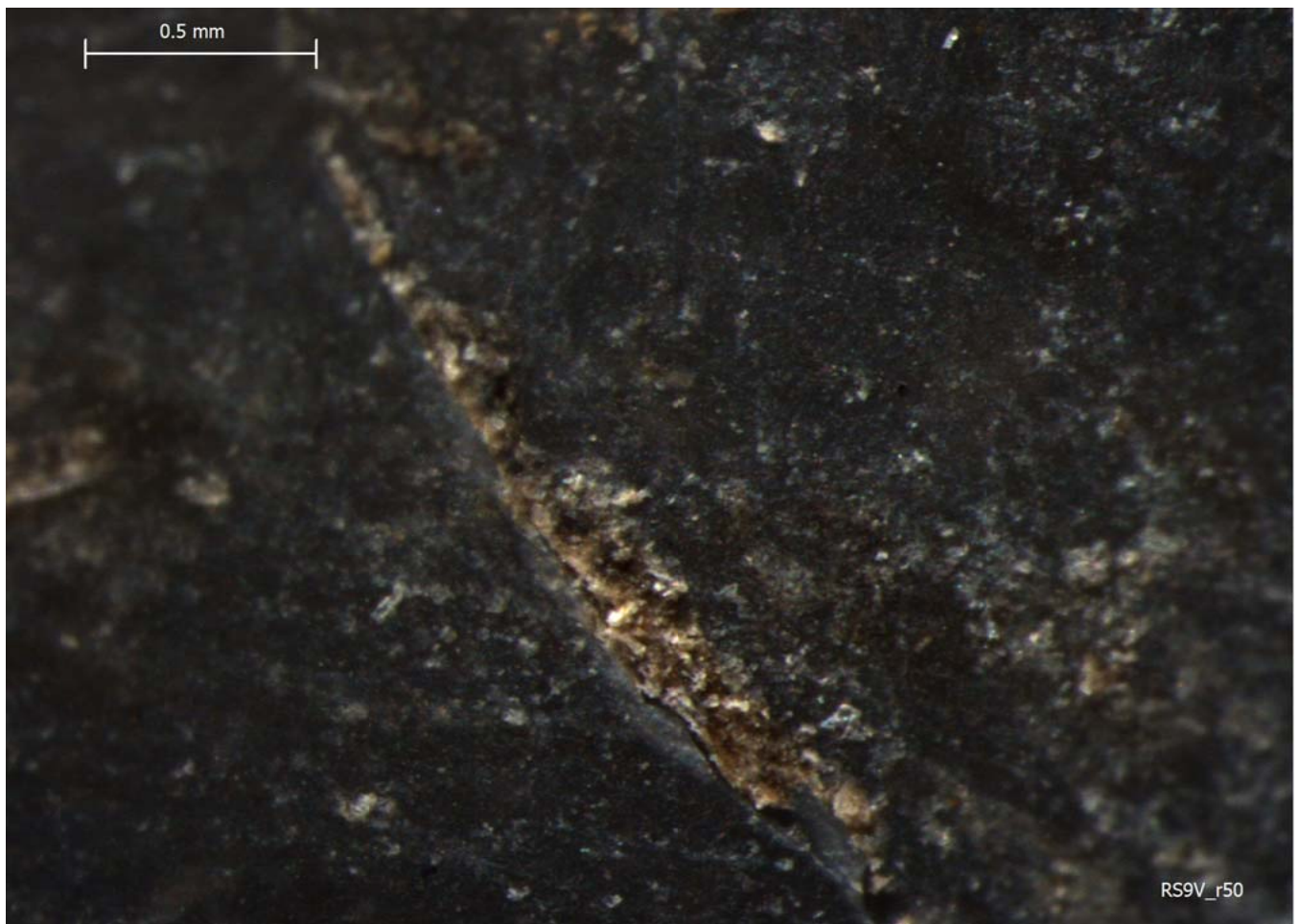
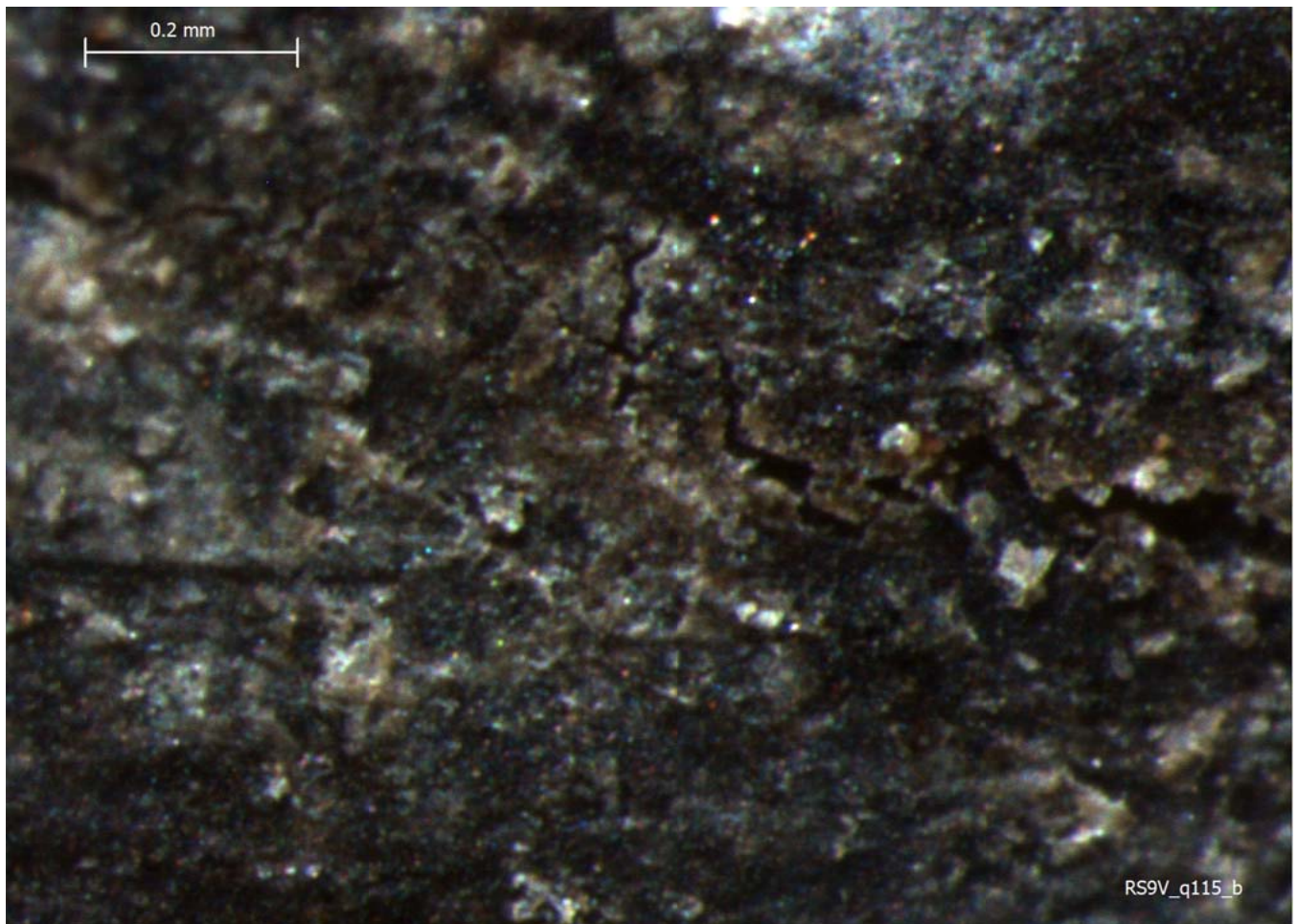






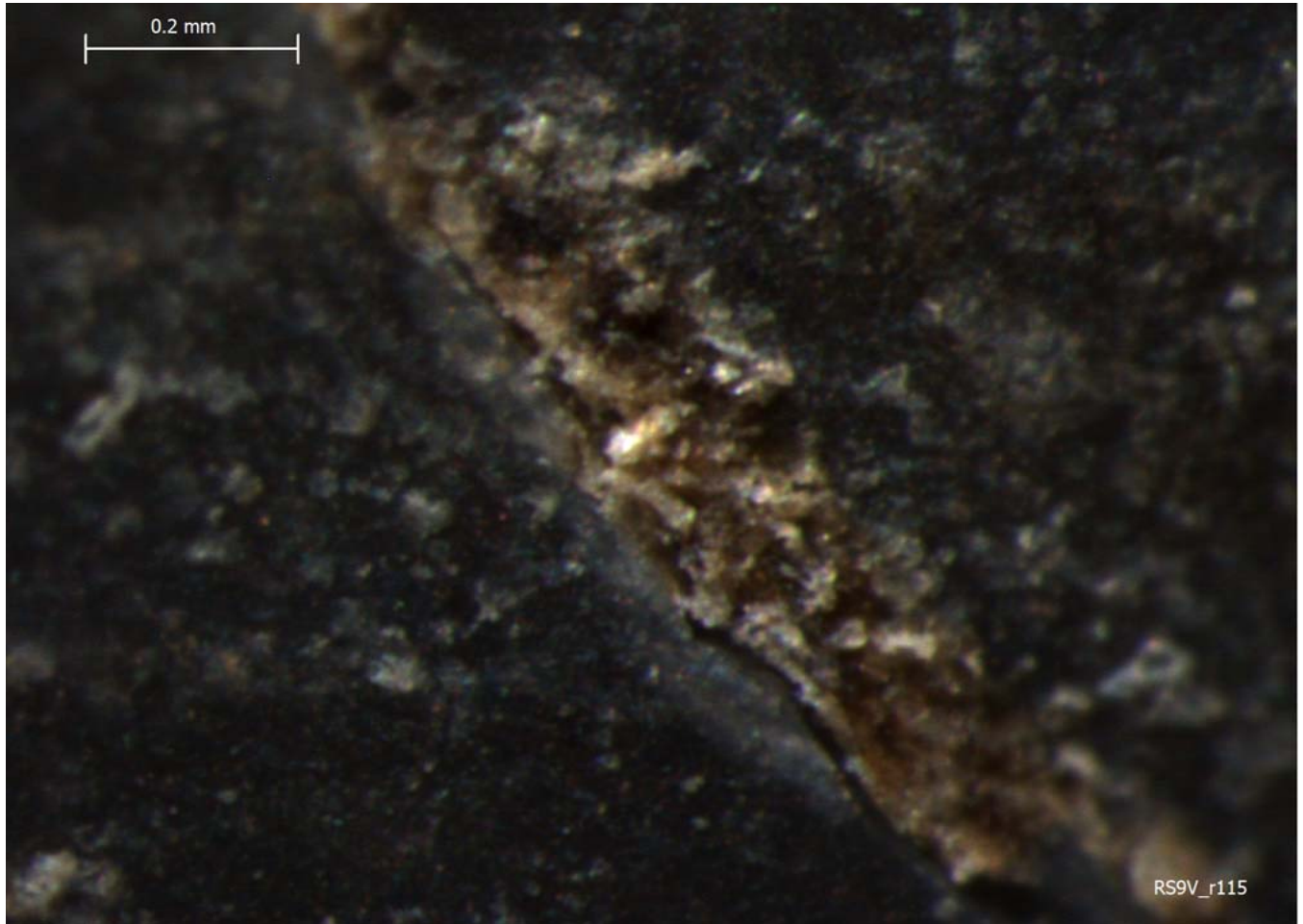








0.2 mm



RS9V\_r115